

EGVA AD 2.1 LOCATION INDICATOR AND NAME	
EGVA - FAIRFORD	

EGVA AD 2.2 - AERODROME GEOGRAPHICAL AND ADMINISTRATIVE DATA		
1	ARP Co-ordinates and site at AD:	N51 40 55-80 W001 47 24-10 Mid-point of Runway 09/27
2	Direction and distance from City:	8.7nm N of Swindon
3	Elevation/Reference Temperature:	286ft / 22°C
4	Magnetic Variation / Annual Change:	3.36°W (MAY 03) / 0.23 decreasing
5	Geoid Undulation at AD Elev Position:	----
6	AD Administration: Address: Telephone: Fax: E-mail: Web site:	United States Air Force Royal Air Force Fairford Fairford Gloucestershire GL7 4DL Mil: 94805 Civ: 01285 714805 Mil: 94805 4048 (Ops) Civ: 01285 714805 x4048 (Ops)
7	Types of Traffic Permitted (IFR/VFR):	IFR/VFR
8	Remarks:	Nil

EGVA AD 2.3 - OPERATIONAL HOURS		
1	AD:	HO. Airfield at limited service, see NOTAM.
2	Customs and Immigration:	HO
3	Health and Sanitation:	HO
4	AIS Briefing Office:	HO
5	ATS Reporting Office (ARO):	HO
6	MET Briefing Office:	HO when activated for Exercises/Operations only.
7	ATS:	HO
8	Fuelling:	HO
9	Handling:	HO
10	Security:	H24
11	De-icing:	Nil.
12	Remarks:	PNR for Military aircraft. PPR for Civil aircraft.

17 APR 03

EGVA AD 2.4 - HANDLING SERVICES AND FACILITIES		
1	Cargo Handling Facilities:	Fork Lifts.
2	Fuel/Oil /HydraulicTypes:	F34. O-148.
3	Fuelling Facilities/Capacity:	5 Type II Pumphouses and 1 Type III Pumphouse.
4	Oxygen:	LPOX, LOX.
5	De-Icing Facilities:	Nil.
6	Starting Units:	E58. A30.
7	Hangar space for visiting aircraft:	Limited. Subject to prior arrangement.
8	Repair facilities for visiting aircraft:	Nil.
9	Remarks:	Nil.

EGVA AD 2.5 - PASSENGER FACILITIES		
1	Accommodation:	Limited to 20 personnel maximum.
2	Medical Facilities:	Medical Aid Station manned during HO. 1 Ambulance.
3	Remarks:	Nil.

EGVA AD 2.6 - RESCUE AND FIRE FIGHTING SERVICES		
1	AD Category for Fire Fighting:	(M) Nil. (O/R USAF SET 5). (M) Closed PNR. Fire Protection level will be determined according to specific type.
2	Rescue Equipment:	As required for NATO Fire Protection Cat 1 (Cat 9 O/R).
3	Capability for removal of disabled aircraft:	Limited.

EGVA AD 2.7 - SEASONAL AVAILABILITY - CLEARING		
1	Type of Clearing equipment:	3 x Snow Blade trucks. 1 x Urea spreader. 1 x Snow Blower.
2	Remarks:	Nil.

EGVA AD 2.8 - APRONS, TAXIWAYS AND CHECK LOCATIONS DATA					
1	Apron surfaces:	Apron	Surface	Strength	
		1196, 1200 and 1205	Concrete	LCG II	
		Dispersals	Concrete	LCG II	
2	Taxiway width, surface and strength:	Taxiway	Width	Surface	Strength
		Northern	23m	Asphalt/Concrete	LCG II
		Southern	23m	Asphalt/Concrete	LCG II
		North Link	--	--	LCG IV
3	Altimeter Check Location and Elevation:	N/A			
4	VOR Checkpoints: INS Checkpoints:	N/A N/A			
5	Remarks:	<p>1. All taxiways have shoulders either side, widths vary from 25ft to 50ft.</p> <p>2. Parking bays 27, 41, 53, 56 and 60 are PPR through A/D management due to reduced wingtip clearance.</p> <p>3. Twy wingtip clearance reduced due to 7ft tall fence. Caution in following positions:</p> <p>a. Twy B at West (09 Approach) VFR Hold Line, fence 112ft from CL.</p> <p>b. Twy B between HS42 and HS47, fence 131ft from CL.</p> <p>c. Twy A between West VFR Hold Line and Hangar 1196, fence 151ft from CL.</p> <p>d. SW Loop Twy between HS51 and HS53, fence 114ft from CL.</p>			

EGVA AD 2.9 - SURFACE MOVEMENT GUIDANCE AND CONTROL SYSTEM MARKINGS		
1	Use of aircraft stand ID signs: Taxiway guide lines & visual docking/parking guidance system of aircraft stands:	<p>Nil.</p> <p>Yellow taxiway markings and parking slot guidance with ground marshalls.</p>
2	Runway & taxiway markings & lighting:	Runway: Standard markings.
		Taxiway: Standard markings.
3	Stop Bars:	9 red lights and 1 green centre light.
4	Remarks:	Nil.

EGVA AD 2.10 AERODROME OBSTACLES
Not published

06 JUL 06

EGVA AD 2.11 - METEOROLOGICAL INFORMATION		
1	Associated MET Office:	Mildenhall
2	Hours of service: MET Office outside hours:	H24 -----
3	Office responsible for TAF information: Periods of validity:	Mildenhall 6 hours
4	Type of landing forecast: Interval of issuance:	TREND Hourly
5	Briefing/consultation provided:	Self-briefing / personal / telephone x4554
6	Flight documentation: Language(s) used:	Charts / TAFs / METARs Abbreviated plain language text
7	Charts and other information available for briefing or consultation:	Actual / Forecast surface analyses and upper wind charts, rainfall radar, tephigrams, satellite imagery, thunderstorm location
8	Supplementary equipment available for providing information:	PC Data display - ODS
9	ATS units provided with information:	Nil.
10	Additional information (limitation of services etc):	Nil.
11	Remarks:	No assigned Met personnel on station.

EGVA AD 2.12 - RUNWAY PHYSICAL CHARACTERISTICS					
Designations Runway number	True and MAG bearing	Dimensions of Runway (m)	Strength (PCN) and surface of Runway and stopway	Threshold co-ordinates	Threshold elevation highest elevation of TDZ of precision APP Rwy
1	2	3	4	5	6
09	088.01° GEO 091.50° MAG	3046 x 46	PCN 105/R/A/W/T Asphalt/Concrete	N51 40 58.80 W001 48 43.20	285.7ft TDZE 286ft
27	268.01° GEO 271.53° MAG	3046 x 46	PCN 105/R/A/W/T Asphalt/Concrete	N51 41 02.40 W001 46 04.80	255.2ft TDZE 255ft
Desig & Slope of Rwy/Swy	Stopway Dimensions (m)	Clearway Dimensions (m)	Strip Dimensions (m)	OFZ	
7	8	9	10	11	
09 - 0.3%D	294 x 46	294 x 46	-	-	
27 - 0.3%U	306 x 46	306 x 46	-	-	
12	Arresting Systems				
	Nil.				
13	Remarks		Nil.		

EGVA AD 2.13 - DECLARED DISTANCES					
Runway	TORA (m)	TODA (m)	ASDA (m)	LDA (m)	Remarks
1	2	3	4	5	6
09	3,046	3,340	3,340	3,046	
27	3,046	3,352	3,352	3,046	

EGVA AD 2.14 - APPROACH AND RUNWAY LIGHTING								
Runway	Approach lighting Type Length Intensity	Threshold lighting Colour Wingbars	PAPI VASIS Angle Distance from Thr (MEHT)	TDZ lighting Length	Runway Centreline lighting Length Spacing Colour Intensity	Runway edge lighting Length Spacing Colour Intensity	Runway End lighting Colour Wingbars	Stopway lighting Length(m) Colour
1	2	3	4	5	6	7	8	9
09	CL5B 3,000ft/915m H	Nil	PAPI 2-75° --- (57ft)	Nil	Nil	Elevated but flush at intersection White HI Uni, 30m White HI Omni, 90m	Red	Nil
27	CL5B 3,000ft/915m H Sequence Flashing Strobes	Nil	PAPI 2-85° --- (58ft)	Nil	Nil	Elevated but flush at intersection White HI Uni, 30m White HI Omni, 90m	Red	Nil
10	Remarks:		Nil.					

EGVA AD 2.15 - OTHER LIGHTING, SECONDARY POWER SUPPLY	
1	A Bn/I Bn location, characteristics and hours of operation: Nil.
2	Anemometer location and lighting: Nil.
3	Taxiway edge and centreline lighting: Green centreline lighting on all taxiways.
4	Secondary power supply: Switch-over time: Yes. No-break power supply to all essential equipment in control tower.
5	Remarks: Nil.

EGVA AD 2.16 - HELICOPTER LANDING AREA
Nil specified.

19 JAN 06

EGVA AD 2.17 - ATS AIRSPACE			
Designation and lateral limits		Vertical limits	Airspace Classification
1		2	3
Fairford MATZ. Standard size Circle radius 5nm centred on N51 41 00-60 W001 47 24-60 with stub aligned Rwy 27		<u>3,000ft AAL</u> SFC	G
Fairford ATZ Circle radius 2.5nm centred on N51 41 00-60 W001 47 24-60		<u>2,000ft AAL</u> SFC	G
4	ATS Unit Callsign: Language:	Fairford. English.	
5	Transition Altitude:	3,000ft.	
6	Remarks:	Nil.	

EGVA AD 2.18 - ATS COMMUNICATION FACILITIES					
Service Designation	Callsign	Frequency MHz	Hours of Operation		Remarks
			Winter	Summer	
1	2	3	4		5
CAC	Brize Radar	389.575 (ICF) 134.3 (ICF)	HO	HO	* NATO Common Frequency. Available on request only.
APP	Brize Radar	297.8 362.3* 122.1* 119.0 (M) 127.25	HO	HO	* NATO Common Frequency. Available on request only. (M) MATZ Crossing Frequency.
DIR	Brize Director	133.75 264.775	HO	HO	
TWR	Fairford Tower	338.225 119.15	HO	HO	
GND	Fairford Ground	234.25	HO	HO	
OPS	Fairford Dispatcher	233.475	HO	HO	
PMSV	Fairford Metro	257.75	HO	HO	

EGVA AD 2.19 - RADIO NAVIGATION AND LANDING AIDS							
Type Category (Variation)	Ident	Frequency	Hours of Operation Winter Summer # and by arrangement		Antenna Site co-ordinates	Elevation of DME Transmitting antenna	Remarks
1	2	3	4		5	6	7
TACAN	FFA	113.4	HO	HO	N51 40 54.09 W001 47 51.41	299ft	CH 81X H24 MP ±0500-0800 Mon
SSR			HO	HO	N51 45 10.78 W001 35 12.69		Remote site at Brize.
SRE	Brize DIR	264.775 119.0	HO	HO	N51 45 10.78 W001 35 12.69		
ILS / DME	I-FFD	111.1	HO	HO			Rwy 09 - QFU 092°
	Glidepath				N51 41 03.37 W001 48 23.81		GP 2.75° MP ±0500-0800 Tue
	Localiser				N51 41 02.77 W001 45 45.99		LLZ 092° MP ±0500-0800 Mon
	MM						GP 2.75°
	OM						No practice App authorised.
ILS / DME	I-FFA	111.1	HO	HO			Rwy 27 - QFU 272°
	Glidepath				N51 41 06.04 W001 46 23.08		GP 2.85° MP ±0500-0800 Wed
	Localiser				N51 40 58.58 W001 49 03.43		LLZ 272° MP ±0500-0800 Mon
	MM						GP 2.85°
	OM						No practice App authorised.

22 DEC 05

EGVA AD 2.20 - LOCAL TRAFFIC REGULATIONS	
1	<p>Airport regulations</p> <p>A/D in limited service status, not available as Wx alternate. USAF ATC, Ops and Wx on standby status †0730-1630 Mon-Fri. Arpt and Rwy remain closed unless opened by NOTAM with special arrangement for 16AF/A3-DET3 Tel: 01638 542125. Fax: 01638 543525 with when, for how long and why. Fairford CTC 420 ABS/OS Tel: 01285 714065 to coordinate arrival and obtain specific local procedures.</p>
2	<p>Ground Movement</p> <p>Porous friction surface, no 180° turns or engine shutdowns, expect back taxi via runway. First 1,150ft Rwy 09 and first 475ft Rwy 27 is concrete.</p>
3	<p>CAT II/III Operations</p> <p>Nil.</p>
4	<p>Warnings</p> <p>a. Bird hazard.</p> <p>b. Portions of of NE and SW Taxiways not visible from ATC Tower.</p>
5	<p>Helicopter Operations</p> <p>No designated Helicopter landing area. Helicopters may operate from Main Runway. Skid equipped Helicopters may conduct operations to / from designated parking areas.</p>
6	<p>Use of Runways</p> <p>None specified.</p>
7	<p>Training</p> <p>None specified.</p>

EGVA AD 2.21 - NOISE ABATEMENT PROCEDURES	
Mandatory Procedures:	
a.	Avoid overflight of local towns and villages.
b.	Mandatory quiet hours 2300-0600(A) Mon-Thu, 1800 Fri - 0600 Mon and UK Public Holidays.
c.	Runway 27 preferred Runway for Noise Abatement.

EGVA AD 2.22 - FLIGHT PROCEDURES		
1	Procedures for in bound aircraft.	All aircraft contact Brize Norton ATSU at least 10 mins prior to ETA.
2	Departures.	Use of SIDs mandatory unless otherwise directed by Departures Control.
3	Radio Communication Failure.	Standard.
4	Missed Approach Procedure.	See TAP Charts
5	Aerodrome Operating Minima.	See TAP Charts
6	Instrument Approach Procedures (IAP) for this aerodrome are established outside controlled airspace.	

EGVA AD 2.23 - ADDITIONAL INFORMATION

Nil.

EGVA AD 2.24 - CHARTS RELATING TO THIS AERODROME

Terminal Approach Procedure Charts	En-Route Charts
Aerodrome Chart AD 2 - EGVA - 1 - 10	UK(L)1
FAIRFORD 1 SID AD 2 - EGVA - 1 - 11	UK(L)2
LECHLADE 1 SID AD 2 - EGVA - 1 - 12	UK(L)4
ILS/DME Rwy 09 AD 2 - EGVA - 1 - 13	UK(L)SP1
ILS/DME Rwy 27 AD 2 - EGVA - 1 - 14	
HI TAC Rwy 09 AD 2 - EGVA - 1 - 15	UK(H)2
HI TAC Rwy 27 AD 2 - EGVA - 1 - 16	UK(H)6
VISUAL AD 2 - EGVA - 1 - 17	
	EU(L)2
	EU(L)9
	EU(H)2
	EU(H)9
	EU(H)SP1
	EU(H)SP1-OAT
	EU(H)SP2
	EU(H)SP3

08 JUN 06

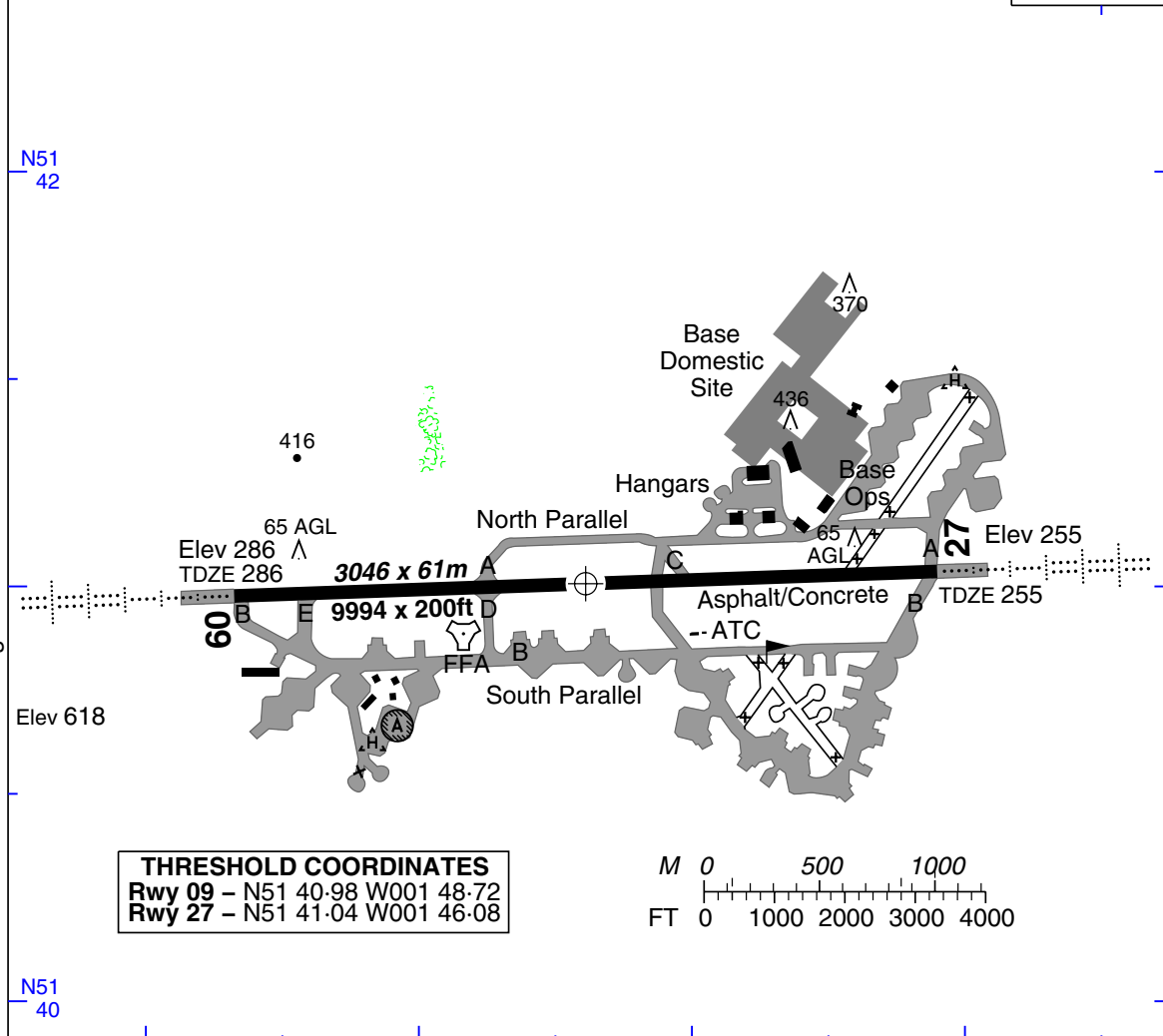
AERODROME

FAIRFORD

EGVA/FFD ENGLAND

Elev 286	Var 3°W	ARP	N51 41.01 W001 47.40 (WGS 84)		D1
FAIRFORD GROUND 234-25		TOWER 119-15 338-225	BRIZE APPROACH 127-25 297-8		FAIRFORD DISPATCH (OPS) 233-475
W001 49		W001 48	W001 47	W001 46	BRIZE ATIS 259-0

Changes: Editorial



THRESHOLD COORDINATES	
Rwy 09	- N51 40.98 W001 48.72
Rwy 27	- N51 41.04 W001 46.08

RWY	SLOPE	LDA m/ft	APP LGT		RWY LGT
09(088°T)	0.3%D	3046/9994	P 2.75° (57)	CL5B(H)	RTHL:REDL(H):RENL
27(268°T)	0.3%U	3046/9994	P 2.85° (58)		

- AD in **limited service status** : not avbl as Wx alternative. USAF ATC, Ops & Wx on standby status 0730-1630 Mon-Fri. AD and rwy clsd unless opened by NOTAM with special arrangement for 16AF/A3-DET3. Tel: 01638 542125, Fax: 01638 543525 detailing when, for how long and why. Fairford CTC 429 ABS/OS Tel 01285 714065 to co-ord arr & obtain specific local procs.
- CAUTION.** Bird Hazard, waterfowl may overfly AD. Seasonal hazard, Canada geese Oct-Dec.
- CAUTION.** Wingtip clearance reduced due 7ft Herras fencing; **exercise care** on Twys A,B & SW loop. Stands 27,41,53,56 & 60 **PPR only**, through AD management.
- Porous friction surface, no 180° turns or engine shutdowns, expect back taxi via rwy.
- Stopways.
 - Rwy 09. 306m/1003ft; concrete.
 - Rwy 27. 294m/963ft; concrete.
- Twy C unlit. Day/VFR use only. C21/C12 or similar airframe only.
- Mandatory Noise Abatement procedures:** avoid local towns & villages. Quiet hrs: 2300-0600 wkday, 1800 Fri-0600 Mon, P Hols.

No1 AIDU (RAF)/EGVAD1

FAIRFORD
TERPS (FAA)

AERODROME

FAIRFORD 1 SID

FAIRFORD

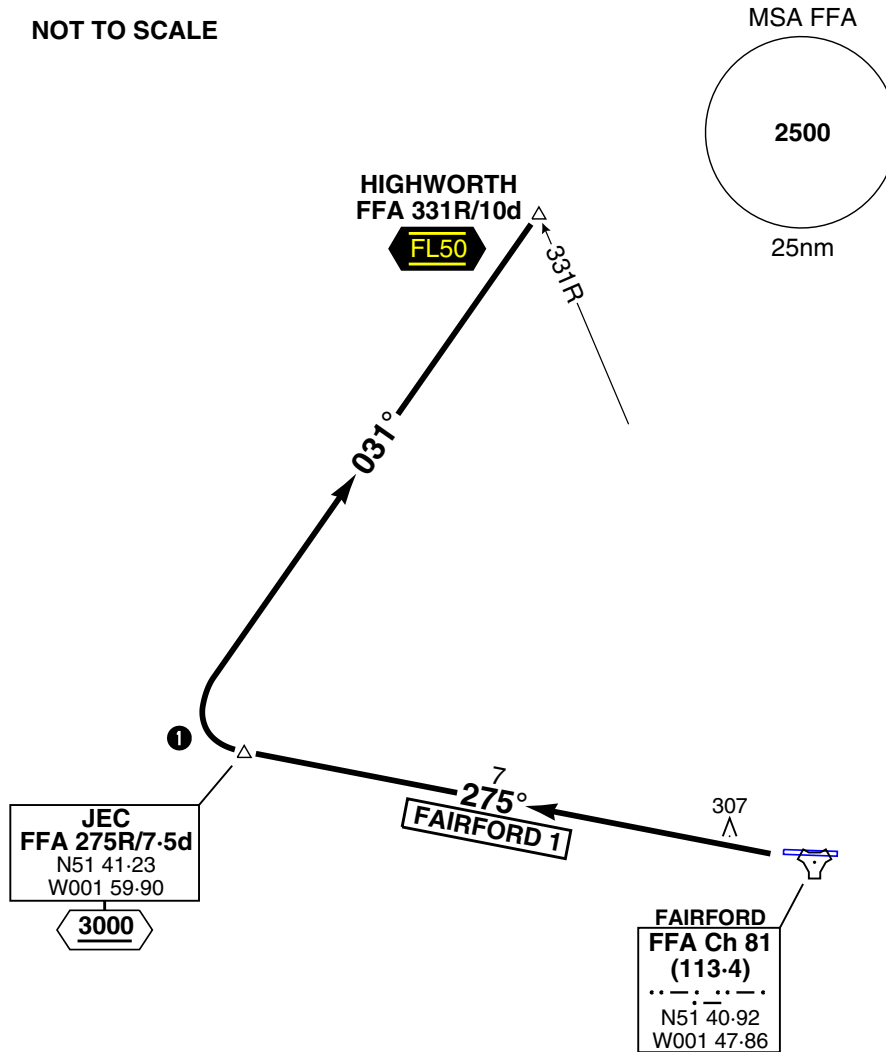
EGVA/FFD ENGLAND

Changes: Hdgs

No1 Aeronautical Information Documents Unit (RAF) EGVAG1

Elev 286	Var 3°W	TA 3000	TRL ATC		G1
FAIRFORD GROUND 234.25		TOWER 119.15 338.225	BRIZE APPROACH 127.25 297.8		FAIRFORD DISPATCH (OPS) 233.475
					BRIZE ATIS 259.0

NOT TO SCALE



MNM RQRD CLIMB RATE (fpm)

GRAD	80	120	150	180	210	250
6.5%	530	790	990	1190	1390	1650

- ① Completion of SID to 7.5d (JEC) is **mandatory** for noise abatement, unless otherwise directed by ATC for collision avoidance vectors.
- ② Expeditious climb to **2000** required for noise abatement.

SID	RWY	ROUTEING (Including Mnm Noise Routes)
FAIRFORD 1	27 271°M	Intcp FFA 277R to 7.5d (JEC) not below 3000, then right on Tr 031° to HIGHWORTH FFA 331R/10d at FL50 .

FAIRFORD
TERPS (FAA)

FAIRFORD 1 SID

28 SEP 06

LECHLADE 1 SID

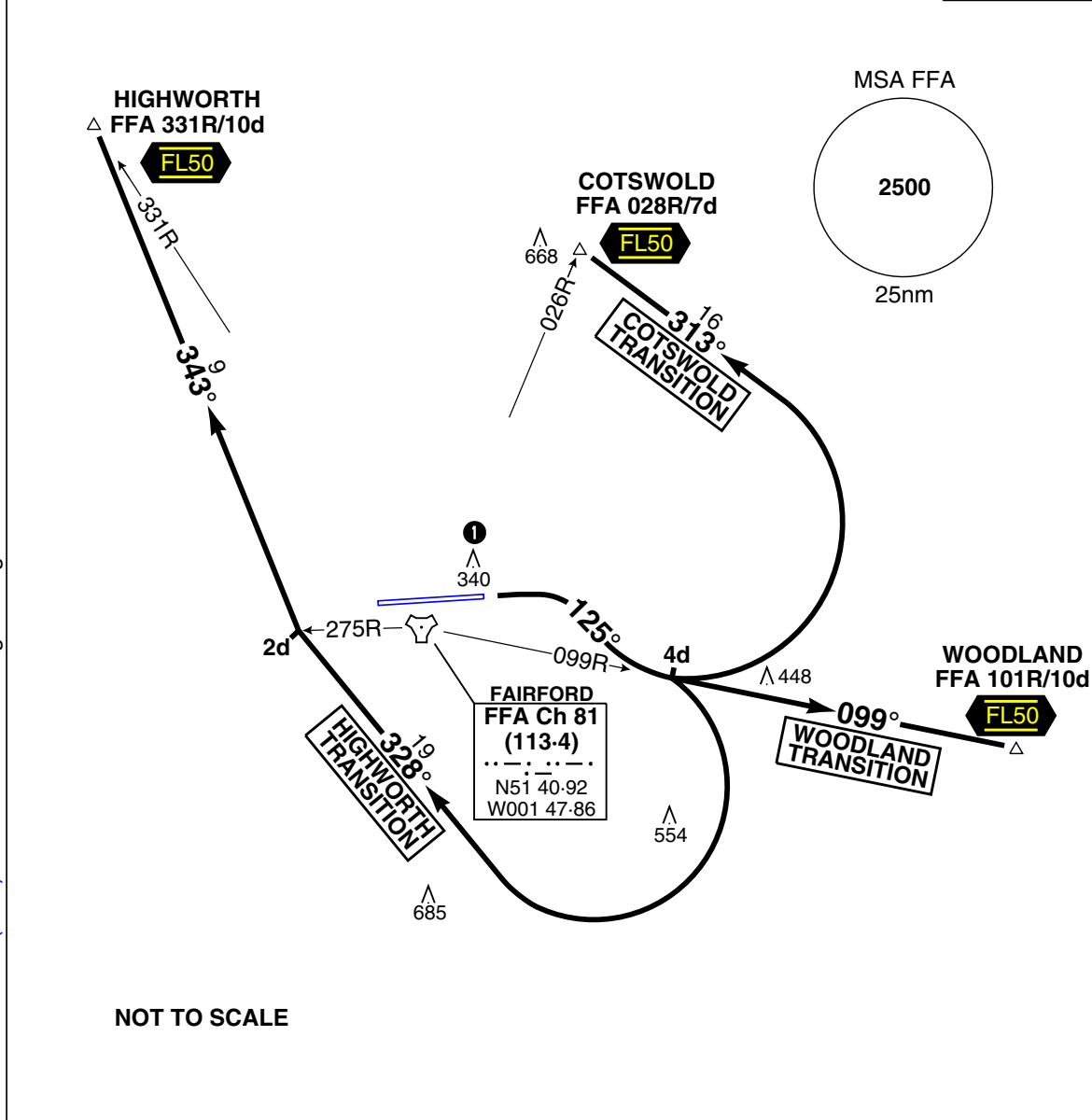
FAIRFORD

EGVA/FFD ENGLAND

Changes: Hdgs

No 1 Aeronautical Information Documents Unit (RAF) EGVAG2

Elev 286	Var 3°W	TA 3000	TRL ATC		G2
FAIRFORD GROUND 234-25	TOWER 119-15 338-225	BRIZE APPROACH 127-25 297-8	FAIRFORD DISPATCH (OPS) 233-475		
					BRIZE ATIS 259-0



NOT TO SCALE

- ① CAUTION. Rwy 03. Trees 86agl, 868m/2847ft from end of rwy, 383m/1258ft left of RCL.
- ② Adherence to SID is **mandatory** for noise abatement.

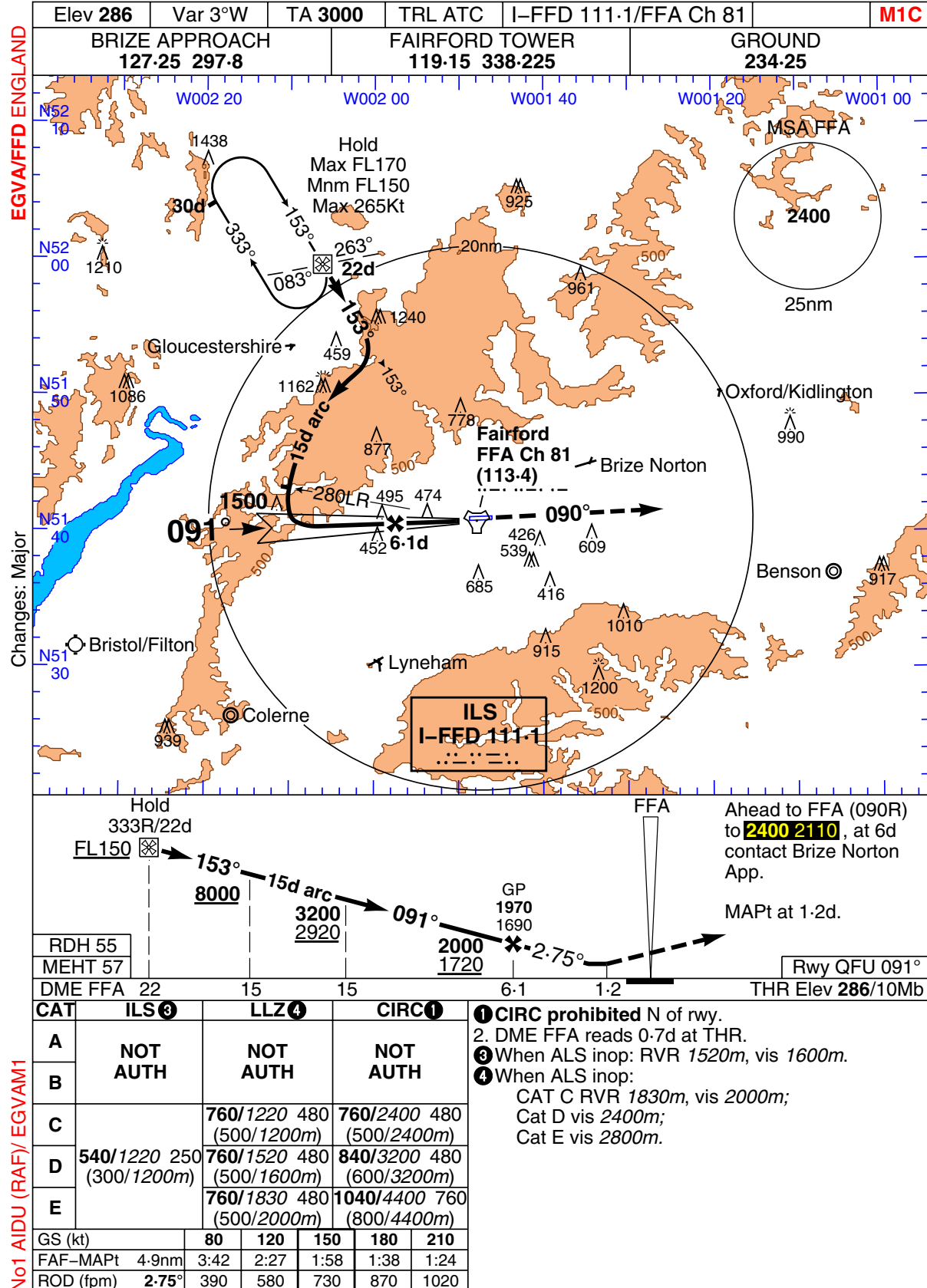
SID	RWY	ROUTEING (Including Mnm Noise Routes)
LECHLADE 1 INITIAL DEP	09 091°M	Right on Tr 125° to intcp FFA 099R at 4d, then via Transition.
		Woodland Transition: Continue to 10d (LND) at FL50 .
		Highworth Transition: Right on Tr 328° to FFA 275R/2d, then right on Tr 343° to FFA 331R/10d at FL50 .
		Cotswold Transition: Left on Tr 313° to COTSWOLD at FL50 .

FAIRFORD
TERPS (FAA)

LECHLADE 1 SID

ILS/DME Rwy 09

FAIRFORD



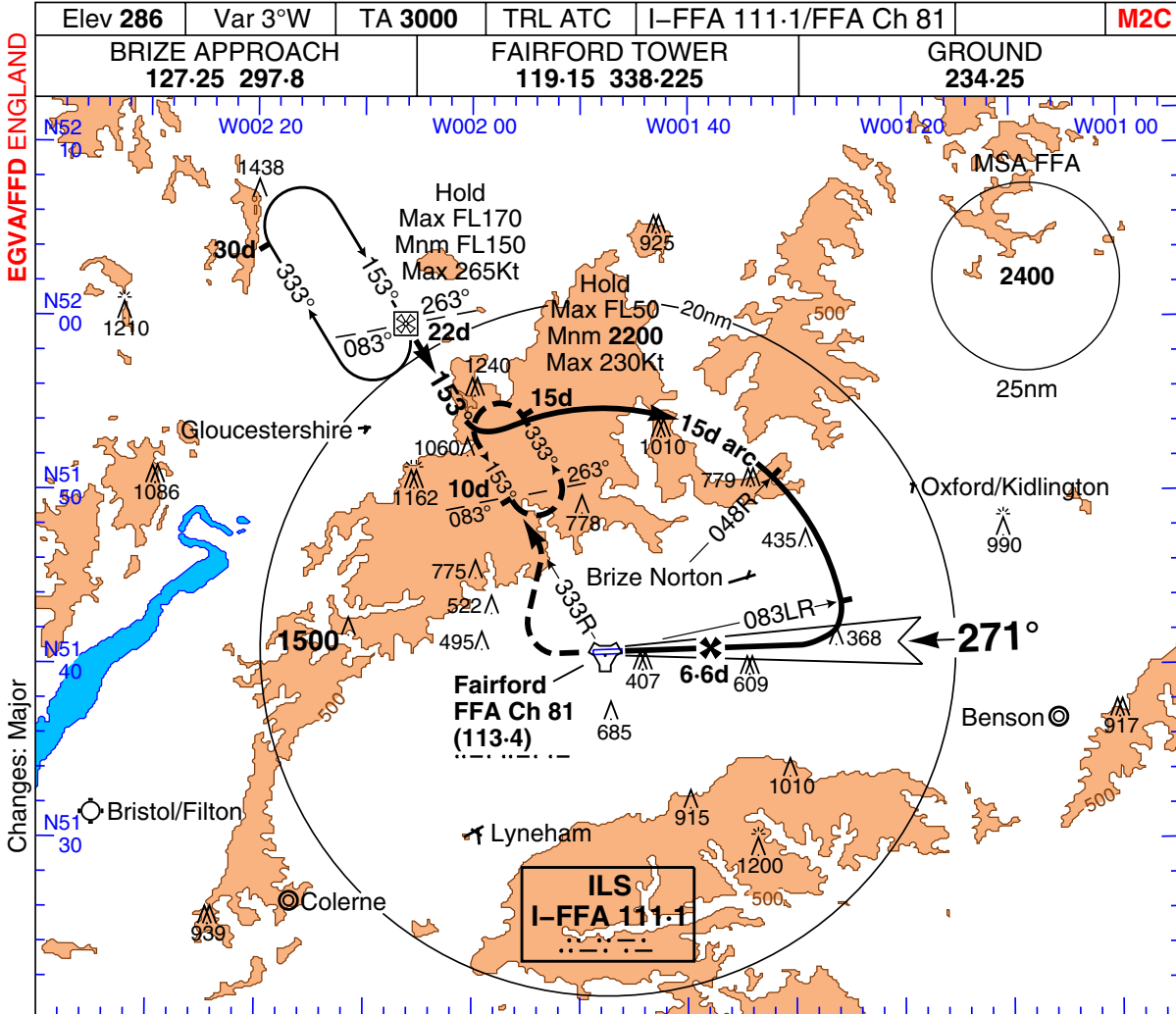
FAIRFORD
TERPS (FAA)

ILS/DME Rwy 09

03 AUG 06

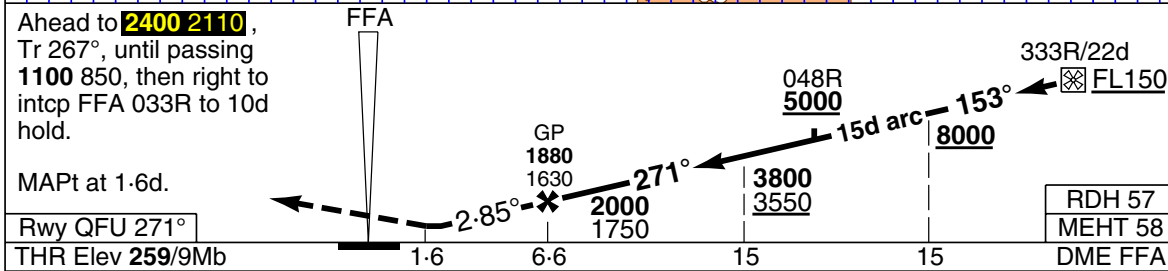
ILS/DME Rwy 27

FAIRFORD



EGVA/FFD ENGLAND

Changes: Major



Ahead to 2400 2110 , Tr 267°, until passing 1100 850 , then right to intcp FFA 033R to 10d hold.		FFA		333R/22d FL150	
MAPt at 1.6d.		GP 1880 1630	271°	15d arc	153°
Rwy QFU 271°		2.85°	2000 1750	3800 3550	8000
THR Elev 259/9Mb		1.6	6.6	15	15
					RDH 57
					MEHT 58
					DME FFA
CAT	ILS ③	LLZ ④	CIRC ①		
A	NOT AUTH	NOT AUTH	NOT AUTH		
B	NOT AUTH	NOT AUTH	NOT AUTH		
C			760/2400	480	
D	500/1220 240 (300/1200m)	680/1220 430 (400/1200m)	840/3200	480	
E		680/1520 430 (400/1600m)	1040/4400	760	
GS (kt)		80 120 150 180 210			
FAF-MAPt 4.6nm		3:27 2:18 1:50 1:32 1:19			
ROD (fpm)	2.85°	400 600 760 910 1060			

No 1 AIDU (RAF)/EGVAM2

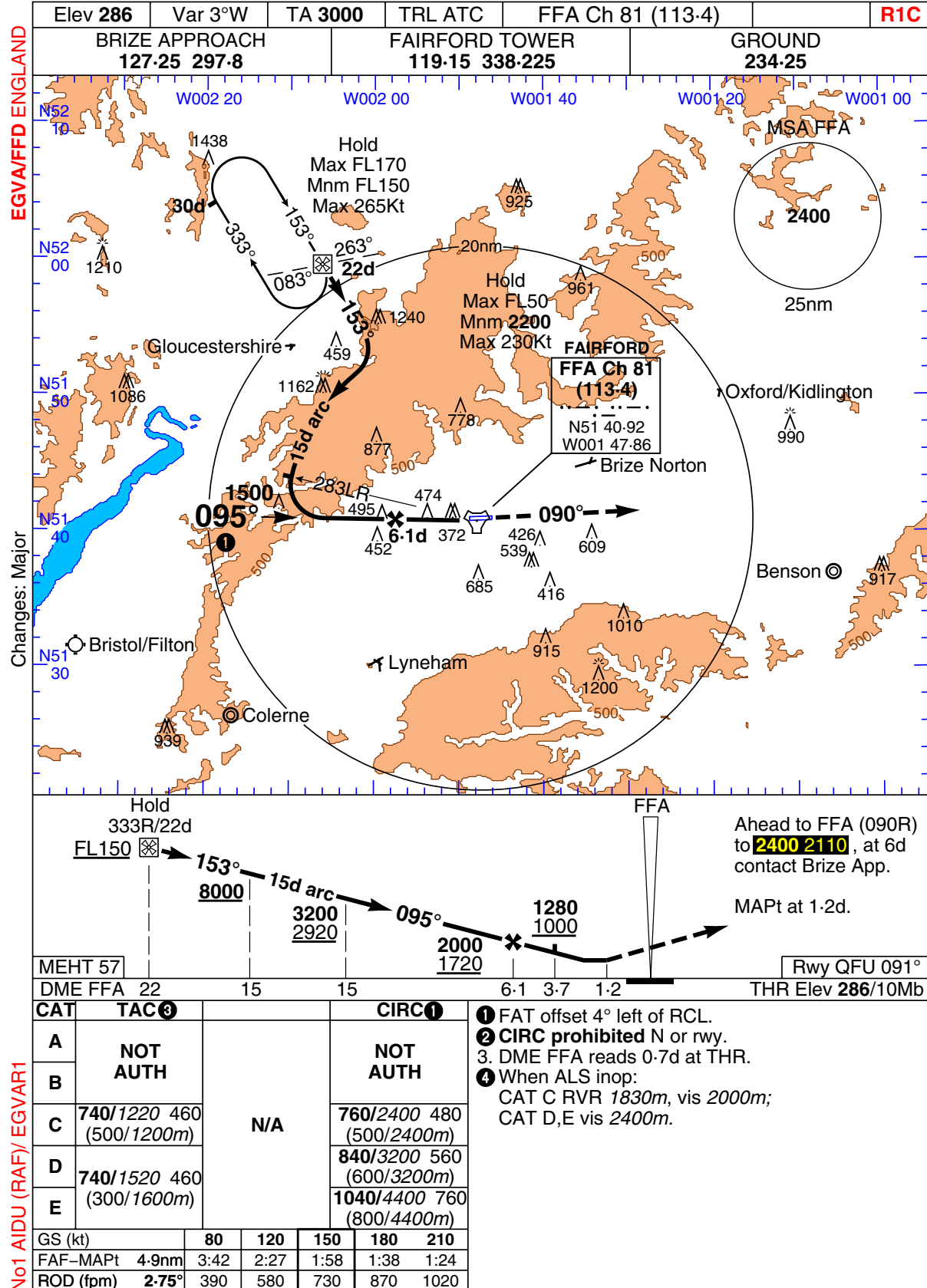
- ① CIRC prohibited N of rwy.
- ② DME FFA reads 1.1d at THR.
- ③ When ALS inop: RVR 1520m, vis 1600m.
- ④ When ALS inop:
 CAT A,B RVR 1520m, vis 1600m;
 CAT C,D RVR 1830m, vis 2000m;
 CAT E vis 2400m.

FAIRFORD
TERPS (FAA)

ILS/DME Rwy 27

HI TAC Rwy 09

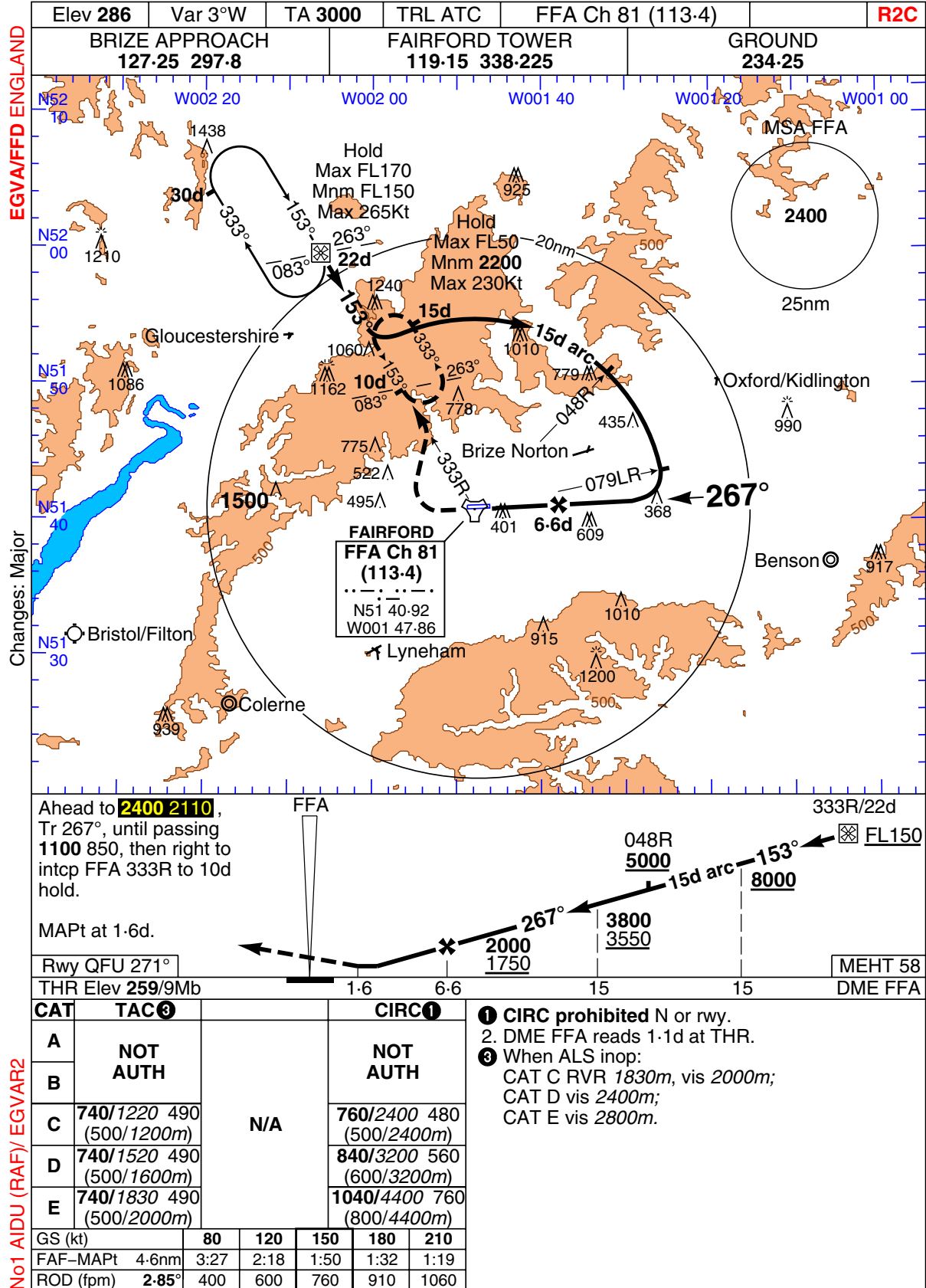
FAIRFORD



03 AUG 06

HI TAC Rwy 27

FAIRFORD



No1 AIDU (RAF)/EGVAR2

VISUAL

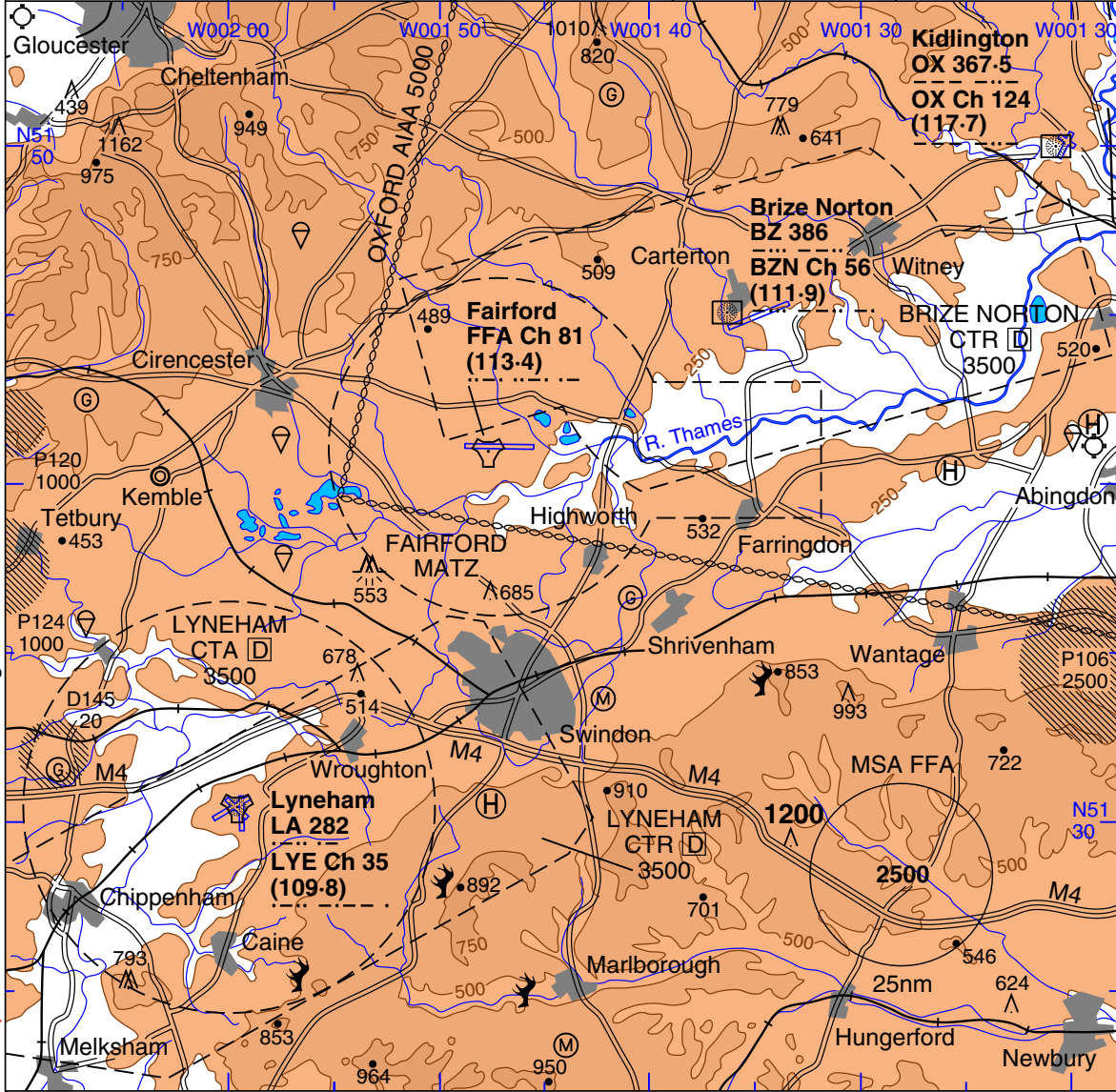
FAIRFORD

EGVA/FFD ENGLAND

Changes: UHF

No1 AIDU (RAF)/European Aeronautical Group Aerad EGVAV1

Elev 286	Var 4°W	TA 3000	TRL ATC		VIC
BRIZE RADAR 127.25 297.8	FAIRFORD TWR 119.15 338.225	GROUND 234.25	OPS 233.475	WX/BRIZE ATIS 259.0	



REMARKS

1. **DO NOT LOW FLY OUTSIDE OF RAF FAIRFORD AIRFIELD BOUNDARY.**
2. Avoid overflying Fairford, Cirencester, Whelford, farms 1.5nm North West of RAF Fairford.
3. **Mandatory Noise Abatement procedures:** avoid local towns & villages.
Quiet hrs: 2300-0600 wkday, 1800 Fri-0600 Mon, P Hols.

FAIRFORD

VISUAL

14 APR 05

INTENTIONALLY BLANK