

EGUL AD 2.1 - LOCATION INDICATOR AND NAME	
EGUL - LAKENHEATH	

EGUL AD 2.2 - AERODROME GEOGRAPHICAL AND ADMINISTRATIVE DATA		
1	ARP Co-ordinates and site at AD:	N52 24 33-60 E000 33 39-60 Mid-point of Runway 06/24
2	Direction and distance from City:	11nm NW of Bury St Edmunds
3	Elevation/Reference Temperature:	32ft / 22°C
4	Magnetic Variation / Annual Change:	2-57°W (MAY 03) / 0-06 decreasing
5	Geoid Undulation at AD Elev Position:	----
6	AD Administration: Address: Telephone: Fax: E-mail: Web site:	United States Air Force Royal Air Force Lakenheath Brandon Suffolk IP79PN Mil: 9205226 4186/2439 Civ: 01638 524186/522439 Mil: 9205226 2316 (Ops) Civ: 01638 522316 (Ops) --- ---
7	Types of Traffic Permitted (IFR/VFR):	IFR/VFR
8	Remarks:	Nil

EGUL AD 2.3 - OPERATIONAL HOURS		
1	AD:	PPR 72hrs PNR. 0600(A)-2200(A) Mon-Thu, 0600(A)-1800(A) Fri. Closed Sat, Sun UK and US Holidays.
2	Customs and Immigration:	Nil.
3	Health and Sanitation:	Nil.
4	AIS Briefing Office:	HO.
5	ATS Reporting Office (ARO):	HO.
6	MET Briefing Office:	HO. Closed weekends and Public Holidays
7	ATS:	HO.
8	Fuelling:	HO.
9	Handling:	HO.
10	Security:	H24.
11	De-icing:	HO.
12	Remarks:	PPR for Military aircraft. PPR for Civil aircraft.

14 APR 05

EGUL AD 2.4 - HANDLING SERVICES AND FACILITIES		
1	Cargo Handling Facilities:	Fork Lifts, K-Loaders and Flatbeds.
2	Fuel/Oil /HydraulicTypes:	F34. O-148.
3	Fuelling Facilities/Capacity:	Bowsers.
4	Oxygen:	LPOX, LOX.
5	De-icing Facilities:	De-icing Unit.
6	Starting Units:	E45. A27, 28. EA29.
7	Hangar space for visiting aircraft:	Limited. Subject to prior arrangement.
8	Repair facilities for visiting aircraft:	Nil.
9	Remarks:	Nil.

EGUL AD 2.5 - PASSENGER FACILITIES		
1	Accommodation:	Limited.
2	Medical Facilities:	Hospital with A & E capability.
3	Remarks:	No passenger terminal.

EGUL AD 2.6 - RESCUE AND FIRE FIGHTING SERVICES		
1	AD Category for Fire Fighting:	* Crash Category 5 during operational hours.
2	Rescue Equipment:	As required for Crash Category 5.
3	Capability for removal of disabled aircraft:	Available during operational hours.
4	Remarks:	* Fire protection NATO 7.

EGUL AD 2.7 - SEASONAL AVAILABILITY - CLEARING		
1	Type of Clearing equipment:	Full mechanical and chemical facilities.
2	Remarks:	Nil.

EGUL AD 2.8 - APRONS, TAXIWAYS AND CHECK LOCATIONS DATA					
1	Apron surfaces:	Apron	Surface	Strength	
		Hangars	Concrete	LCG III	
2	Taxiway width, surface and strength:	Taxiway	Width	Surface	Strength
		Northern	30m	Concrete	LCG II
		Southern	30m	Asphalt	LCG II
3	Altimeter Check Location and Elevation:	N/A			
4	VOR Checkpoints: INS Checkpoints:	Nil. Nil.			
5	Remarks:	Nil.			

EGUL AD 2.9 - SURFACE MOVEMENT GUIDANCE AND CONTROL SYSTEM MARKINGS		
1	Use of aircraft stand ID signs: Taxiway guide lines & visual docking/parking guidance system of aircraft stands:	Nil. Follow Me Truck.
2	Runway & taxiway markings & lighting:	Runway: Standard markings
		Taxiway: Standard markings
3	Stop Bars:	FAA type. Yellow double solid double dashed.
4	Remarks:	Nil.

EGUL AD 2.10 - AERODROME OBSTACLES	
Not published.	

14 APR 05

EGUL AD 2.11 - METEOROLOGICAL INFORMATION		
1	Associated MET Office:	Lakenheath.
2	Hours of service: MET Office outside hours:	HO. HO.
3	Office responsible for TAF information: Periods of validity:	Weather Office Sembach Germany. H24.
4	Type of landing forecast: Interval of issuance:	Observations. Hourly.
5	Briefing/consultation provided:	Self-briefing / personal.
6	Flight documentation: Language(s) used:	Charts / TAFs / METARs. Abbreviated plain language text.
7	Charts and other information available for briefing or consultation:	Actual / Forecast surface analyses and upper wind charts, rainfall radar, tephigrams, satellite imagery, thunderstorm location.
8	Supplementary equipment available for providing information:	PC Data display.
9	ATS units provided with information:	LATCC and other USAF Europe Units.
10	Additional information (limitation of services etc):	Nil.
11	Remarks:	Nil.

EGUL AD 2.12 - RUNWAY PHYSICAL CHARACTERISTICS							
Designations Runway number	True and MAG bearing	Dimensions of Runway (m)	Strength (PCN) and surface of Runway and stopway	Threshold co-ordinates	Threshold elevation highest elevation of TDZ of precision APP Rwy		
1	2	3	4	5	6		
06	055-67° GEO 059-53° MAG	2743 x 46	LCG II Asphalt/Concrete	N52 24 08-87 E000 32 39-78	27-5ft TDZE 31ft		
24	235-70° GEO 238-60° MAG	2743 x 46	LCG II Asphalt/Concrete	N52 24 58-86 E000 34 39-53	28-7ft TDZE 32ft		
Desig & Slope of Rwy/Swy	Stopway Dimensions (m)	Clearway Dimensions (m)	Strip Dimensions (m)	OFZ			
7	8	9	10	11			
06 - 0.01%U	2 x 46	Nil	2865 x 300	-			
24 - 0.01%D	2 x 46	Nil	2865 x 300	-			
12	Arresting Systems						
Rwy 06	E5 _____ (95ft Ovrn)	BAK-12(B) ___ (1200ft)	BAK-12(B) ___ (2500ft)	BAK-12(B) ___ (2500ft)	BAK-12(B) ___ (1200ft)	E5 _____ (95ft Ovrn)	Rwy 24
E5 cable in place Dep end. Normal operations, App cable de-rigged, overrun cable rigged.							
13	Remarks		Nil.				

EGUL AD 2.13 - DECLARED DISTANCES					
Runway	TORA (m)	TODA (m)	ASDA (m)	LDA (m)	Remarks
1	2	3	4	5	6
06	2,743	2,743	2,745	2,743	Non weight bearing overrun 304m
24	2,743	2,743	2,745	2,743	Non weight bearing overrun 286m

EGUL AD 2.14 - APPROACH AND RUNWAY LIGHTING								
Runway	Approach lighting Type Length Intensity	Threshold lighting Colour Wingbars	PAPI VASIS Angle Distance from Thr (MEHT)	TDZ lighting Length	Runway Centreline lighting Length Spacing Colour Intensity	Runway edge lighting Length Spacing Colour Intensity	Runway End lighting Colour Wingbars	Stopway lighting Length(m) Colour
1	2	3	4	5	6	7	8	9
06	CL2B 1,499ft/457m H	---	PAPI 2.5° 348m ---	---	---	Elevated but flush at intersetion White HI Uni, 30m White LI Omni, 90m	Red H	---
24	CL5B 3,000ft/914m H	---	PAPI 3° 348m	---	---	Elevated but flush at intersetion White HI Uni, 30m White LI Omni, 90m	Red H	---
10	Remarks:		Nil.					

EGUL AD 2.15 - OTHER LIGHTING, SECONDARY POWER SUPPLY	
1	A Bn/I Bn location, characteristics and hours of operation: I Bn: N52 24 56-18 E000 32 49-67 "LK" • - • • - • - HO. Red.
2	Anemometer location and lighting: Co-located with windsocks at end of each runway. Windsocks are lit.
3	Taxiway edge and centreline lighting: Blue and Orange edge taxiway lighting.
4	Secondary power supply: Switch-over time: Yes. No-break power supply to all essential equipment in Control Tower.
5	Remarks: Nil.

EGUL AD 2.16 - HELICOPTER LANDING AREA
Nil.

19 JAN 06

EGUL AD 2.17 - ATS AIRSPACE			
Designation and lateral limits		Vertical limits	Airspace Classification
1		2	3
Lakenheath MATZ. Standard. 5nm radius centred on N52 24 33-60 E000 33 39-60 with stubs aligned Rwy 06/24. Lakenheath ATZ. Circle, 2-5nm radius centred on N52 2433-60 E000 3339-60		<u>3,000ft AAL</u> SFC	G
		<u>2,000ft AAL</u> SFC	G
4	ATS Unit Callsign: Language:	Lakenheath. English.	
5	Transition Altitude:	3,000ft.	
6	Remarks:	Nil.	

EGUL AD 2.18 - ATS COMMUNICATION FACILITIES					
Service Designation	Callsign	Frequency MHz	Hours of Operation		Remarks
			Winter	Summer	
1	2	3	4		5
CAC	London Mil	277-775			
APP	Lakenheath Approach	309-2 142-825 136-5	H24	H24	
	Departure Control	250-3	H24	H24	
	Rapcon	309-2 142-825			
SRE / PAR	Lakenheath Radar	256-425 360-075 315-7 386-75 296-675	H24	H24	
Mil MATZ Crossing	Lakenheath Radar	242-05 128-9	HO	HO	
Civil Transit Service	Lakenheath Radar	128-9	H24	H24	H24 Mon-Fri only. 0900-1700 Sat-Sun.
TWR	Lakenheath Tower	338-925 122-1*	HO	HO	* NATO Common Frequency. Available on request only.
GND	Lakenheath Ground	375-45	HO	HO	
ATIS	Lakenheath Information	356-725	HO	HO	
OPS	Lakenheath Dispatcher	244-475	HO	HO	
	Command Post	379-8	H24	H24	
PMSV	Lakenheath Metro	257-75	HO	HO	

EGUL AD 2.19 - RADIO NAVIGATION AND LANDING AIDS							
Type Category (Variation)	Ident	Frequency	Hours of Operation Winter Summer # and by arrangement		Antenna Site co-ordinates	Elevation of DME Transmitting antenna	Remarks
1	2	3	4		5	6	7
TACAN	LKH	110-200	H24	H24	N52 24 23-11 E000 32 52-67	91ft	CH 39X
SRE/PAR	Lakenheath RAD	256-425 360-075 296-675 328-45 315-7 386-75	HO	HO			
SSR			HO	HO			
ILS	I-LAK	109.9	HO	HO			Rwy 06 GP 2.5°. QFU 058°.
	Glidepath				N52 24 11-05 E000 32 56-43		
	Localiser				N52 25 05-43 E000 34 55-42		LLZ 058°.
ILS	I-LKH	109.9	HO	HO			Rwy 24 GP 2.5°. QFU 238°.
	Glidepath				N52 24 55-51 E000 34 21-64		
	Localiser				N52 24 02-88 E000 32 05-42		LLZ 238°.

EGUL AD 2.20 - LOCAL TRAFFIC REGULATIONS	
1.	<p>Airport regulations</p> <ul style="list-style-type: none"> a. PPR required. b. Transient aircraft Instrument Approaches only. c. All aircrew contact Approach Control for status of EGD 203. d. Quiet Hour regulations apply - contact Operations for times.
2.	<p>Ground Movement</p> <ul style="list-style-type: none"> a. Portions of Taxiway not visible from control tower. b. Vehicle driving lanes adjacent to all Taxiways. c. Use Taxi lights at max brilliance for night operations.
3.	<p>CAT II/III Operations</p> <p>Nil</p>
4.	<p>Warnings</p> <ul style="list-style-type: none"> a. EGD 203 situated 7 - 12nm Finals to Rwy 24. b. RAF Mildenhall located 4nm SW, sharing ATZ and MATZ.
5.	<p>Helicopter Operations</p> <p>None specified.</p>
6.	<p>Use of Runways</p> <p>None specified.</p>
7.	<p>Training</p> <p>None specified.</p>

14 APR 05

EGUL AD 2.21 - NOISE ABATEMENT PROCEDURES	
Mandatory Quiet Hours apply. Jet aircraft avoid overflight of towns of Lakenheath, Brandon and Thetford.	

EGUL AD 2.22 - FLIGHT PROCEDURES		
1	Procedures for in bound aircraft.	See TAP Charts
2	Departures.	See TAP Charts
3	Radio Communication Failure.	See TAP Charts
4	Missed Approach Procedure.	See TAP Charts
5	Aerodrome Operating Minima.	See TAP Charts
6	Instrument Approach Procedures (IAP) for this aerodrome are established outside controlled airspace.	

EGUL AD 2.23 - ADDITIONAL INFORMATION	
Nil.	

EGUL AD 2.24 - CHARTS RELATING TO THIS AERODROME	
Terminal Approach Procedure Charts	En-Route Charts
Aerodrome AD 2 - EGUL - 1 - 9	UK(L)1
Rock 1 Departure AD 2 - EGUL - 1 - 11	UK(L)2
HI/LO ILS or TACAN Rwy 06 AD 2 - EGUL - 1 - 13	UK(L)5
ILS Rwy 24 AD 2 - EGUL - 1 - 14	UK(L)5 Offshore Installations
HI ILS Rwy 24 AD 2 - EGUL - 1 - 15	UK(L)SP1
HI/LO TAC Rwy 06 AD 2 - EGUL - 1 - 17	
TAC Rwy 24 AD 2 - EGUL - 1 - 18	UK(H)2
TAC A AD 2 - EGUL - 1 - 19	
HI TAC Rwy 24 AD 2 - EGUL - 1 - 20	EU(L)2
	EU(H)2
	EU(H)SP1
	EU(H)SP2
	EU(H)SP1 - OAT

AERODROME

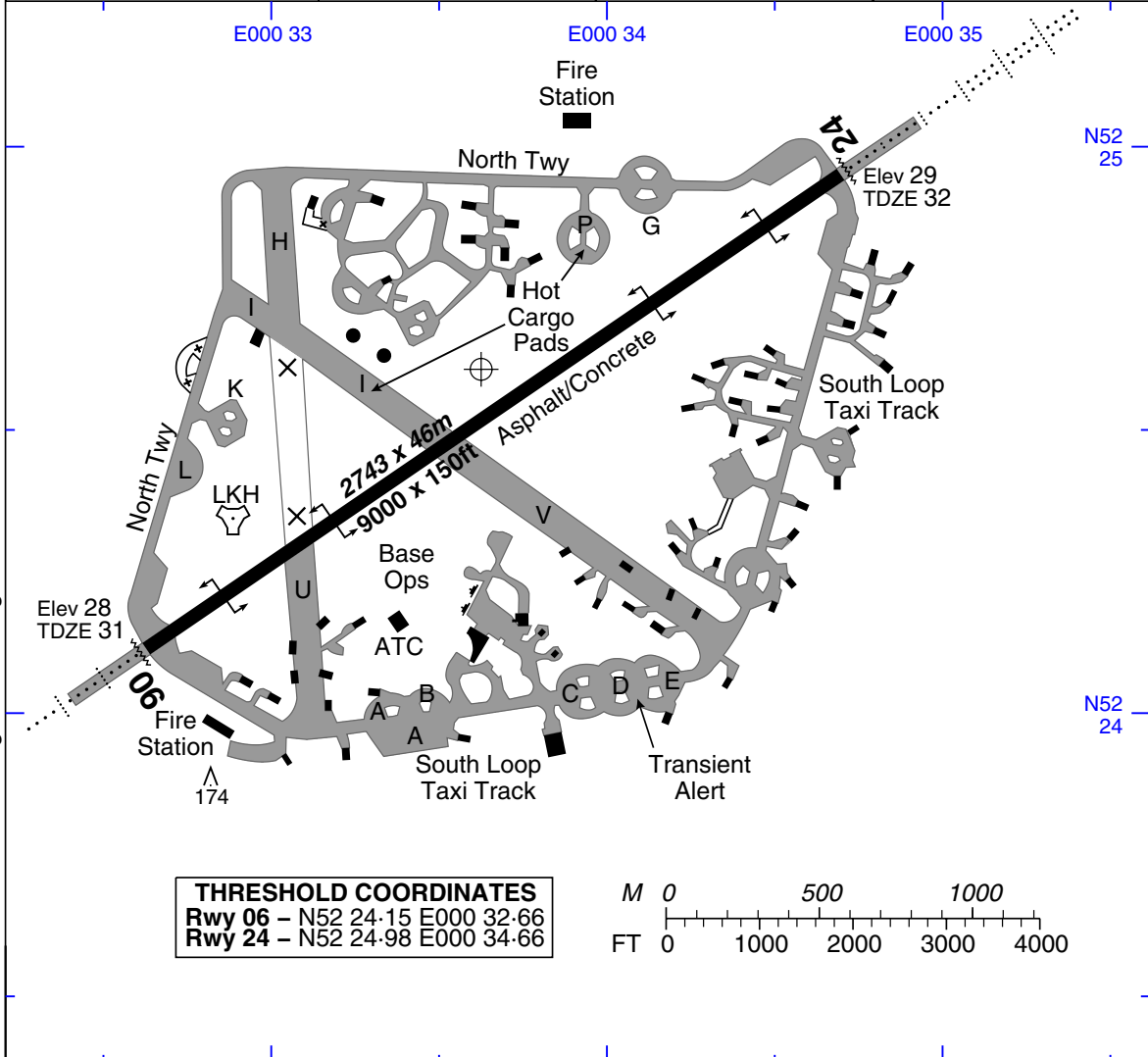
LAKENHEATH

EGUL - ENGLAND

Changes: Hot Cargo Pads

No1 Aeronautical Information Documents Unit EGULD1

Elev 32	Var 2°W	ARP	N52 24.56 E000 33.66 (WGS 84)		D1
LAKENHEATH GROUND 375.45		TOWER 122.1 338.925		DEPARTURES 250.3	ATIS 356.725



THRESHOLD COORDINATES	
Rwy 06	- N52 24.15 E000 32.66
Rwy 24	- N52 24.98 E000 34.66

RWY	SLOPE	LDA m/ft	APP LGT		RWY LGT
06 (056°T)	0.01%U	2743/9000	P2.5° (46)	CL2B (H)	RTHL:REDL(H)
24 (236°T)	0.01%D	2743/9000	P3°	CL5B (H)	

- Circuits: **Prohibited** S of Rwy 06/24.
- RHAG (BAK-12) PNR 15min, inset:
 - Rwy 06: 365m/1200ft; 762m/2500ft.
 - Rwy 24: 365m/1200ft; 762m/2500ft.
 Normal ops: approach cable de-rigged, overrun cables rigged.
- Multiple gates on N and S twy 25m/83ft wide.

LAKENHEATH
TERPS (FAA)

AERODROME

07 AUG 03

INTENTIONALLY BLANK

ROCK 1 DEPARTURE

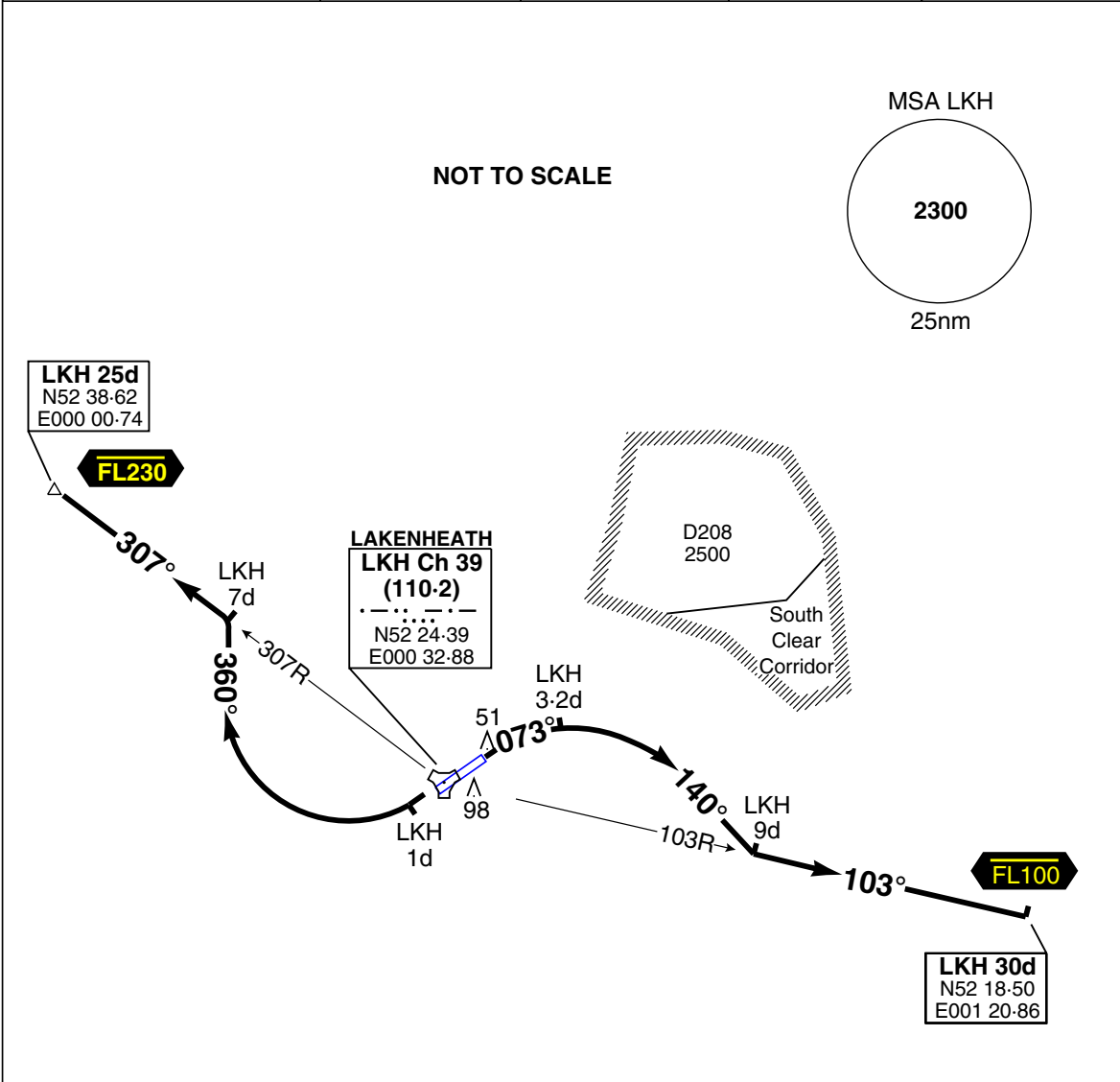
LAKENHEATH

EGUL ENGLAND

Elev 32	Var 2°W	TA 3000	TRL ATC		G1
LAKENHEATH GROUND 375.45		TOWER 122.1 338.925		DEPARTURES 250.3	LONDON MIL 277.775
ATIS 356.725					

Changes: UHF

No1 AIDU (RAF)/European Aeronautical Group Aerad EGULG1



MNM RQRD CLIMB RATE (fpm)

RWY	GRAD	80	120	150	180	210	250	To
24	8.8%	720	1070	1340	1610	1880	2230	450

GENERAL

1. Rwy 24. Turn at LKH 1d **mandatory** to avoid conflicting MILDENHALL traffic. Advise ATC if unable to comply.
2. Radar monitoring required when D208 active, contact TOWER for status.
3. Noise abatement. ATC request expeditious climb.
4. For WESTCOTT corridor, request FL240 with DEPARTURES. Request entry to WESTCOTT corridor with LONDON MIL.

RWY	ROUTING (Including Mnm Noise Routes)
06 058°M	Right on Tr 073° to LKH 3-2d, then right on Tr 140° to intcp LKH 103R (within LKH 9d) to LKH 30d not above FL100 . Climb as directed.
24 238°M	Ahead to LKH 1d, then right on Tr 360° to intcp LKH 307R (within LKH 7d) to LKH 25d not above FL230 . Climb as directed. Mnm Climb Grad: 8.8% to 450.

LAKENHEATH
TERPS (FAA)

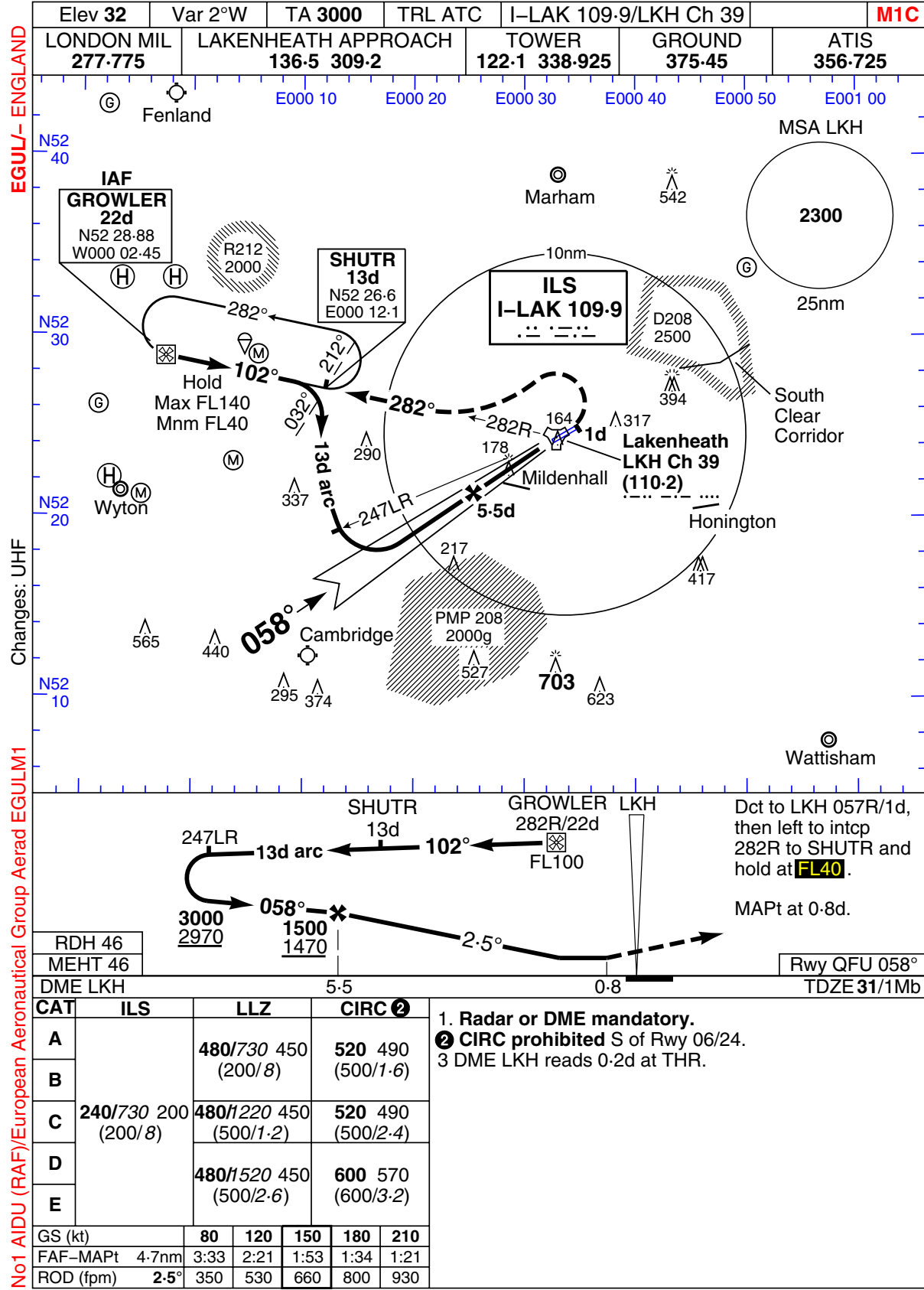
ROCK 1 DEPARTURE

07 AUG 03

INTENTIONALLY BLANK

HI/LO ILS Rwy 06

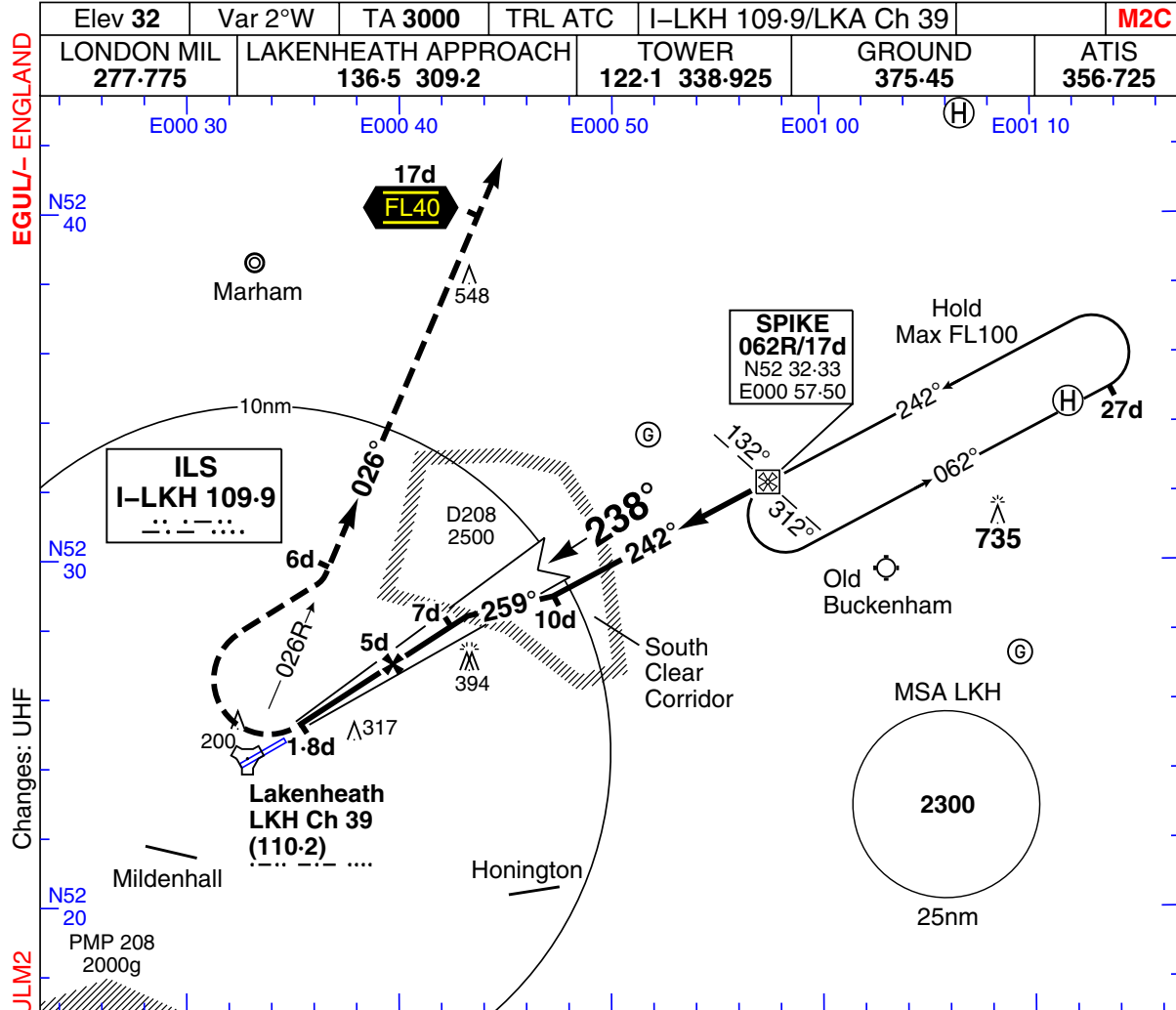
LAKENHEATH



19 JAN 06

HI/LO ILS Rwy 24

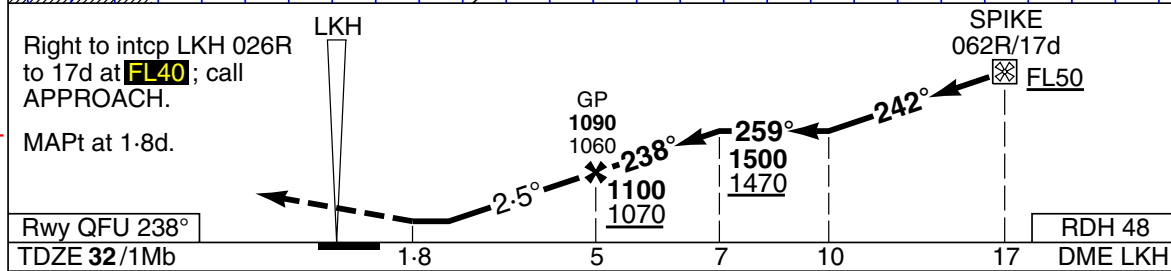
LAKENHEATH



EGUL - ENGLAND

Changes: UHF

No 1 AIDU (RAF)/European Aeronautical Group Aerad EGULM2



Rwy QFU 238°						GP 1090 1060	238°	259°	242°	SPIKE 062R/17d FL50	RDH 48
TDZE 32/1Mb						1100 1070	1500 1470				DME LKH
CAT	ILS	LLZ		CIRC ④							
A		500/730 470		520 490							
B		(500/8)		(500/1.6)							
C	240/730 200	500/1220 470		520 490							
	(200/8)	(500/1.2)		(500/2.4)							
D		500/1520 470		600 570							
		(500/1.6)		(600/3.2)							
E		500/1.8 470		600 570							
		(500/2.0)		(600/3.2)							
GS (kt)		80	120	150	180	210					
FAF-MAPt	3.2nm	2:24	1:36	1:17	1:04	0:55					
ROD (fpm)	2.5°	350	530	660	800	930					

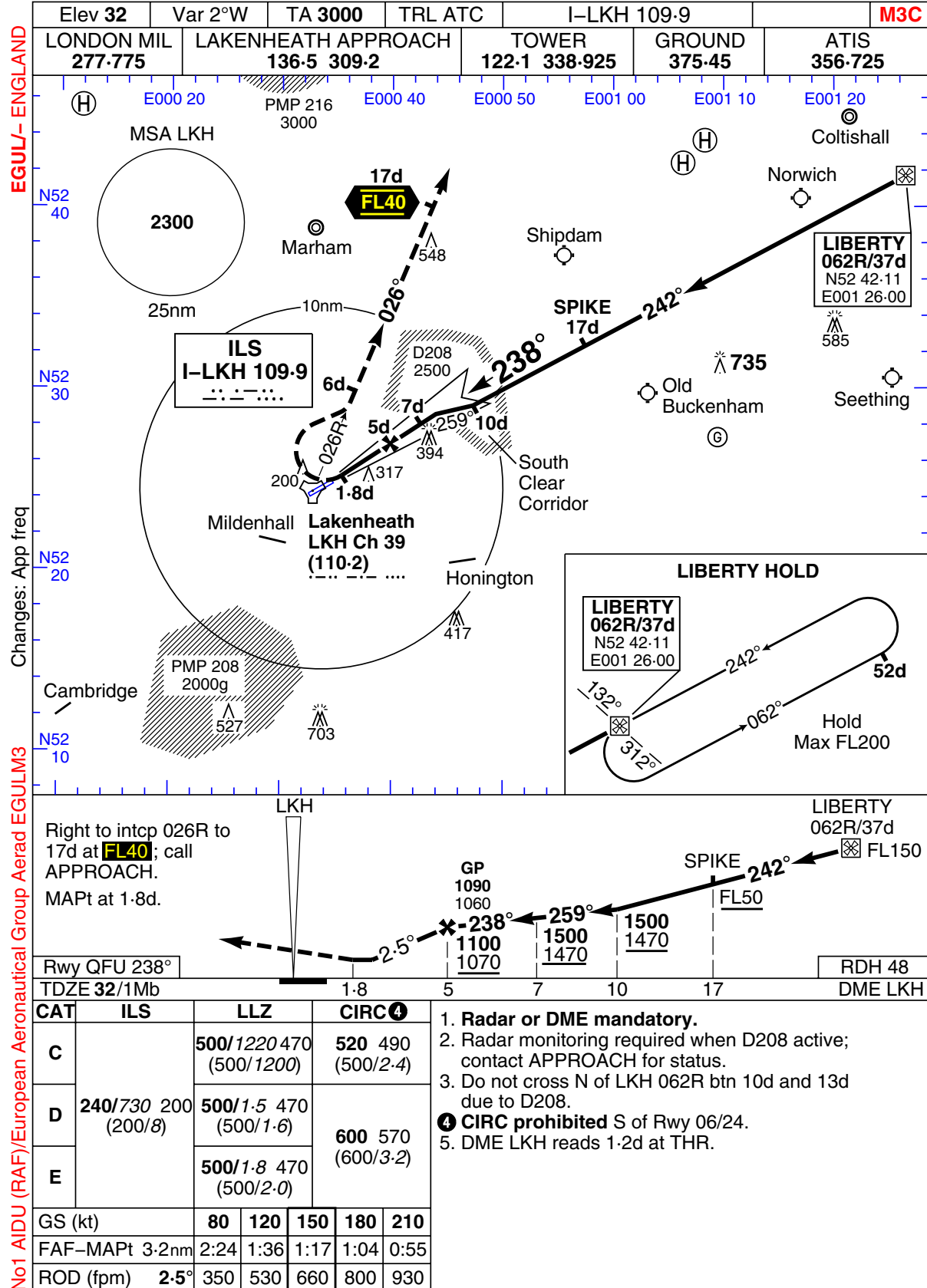
1. Radar or DME mandatory.
2. Radar monitoring required when D208 active; contact APPROACH for status.
3. Do not proceed N of LKH 062R btn 10d and 13d due to D208.
- ④ CIRC prohibited S of Rwy 06/24.
5. DME LKH reads 1-2d at THR.

LAKENHEATH TERPS (FAA)

HI/LO ILS Rwy 24

HI ILS Rwy 24

LAKENHEATH



LAKENHEATH

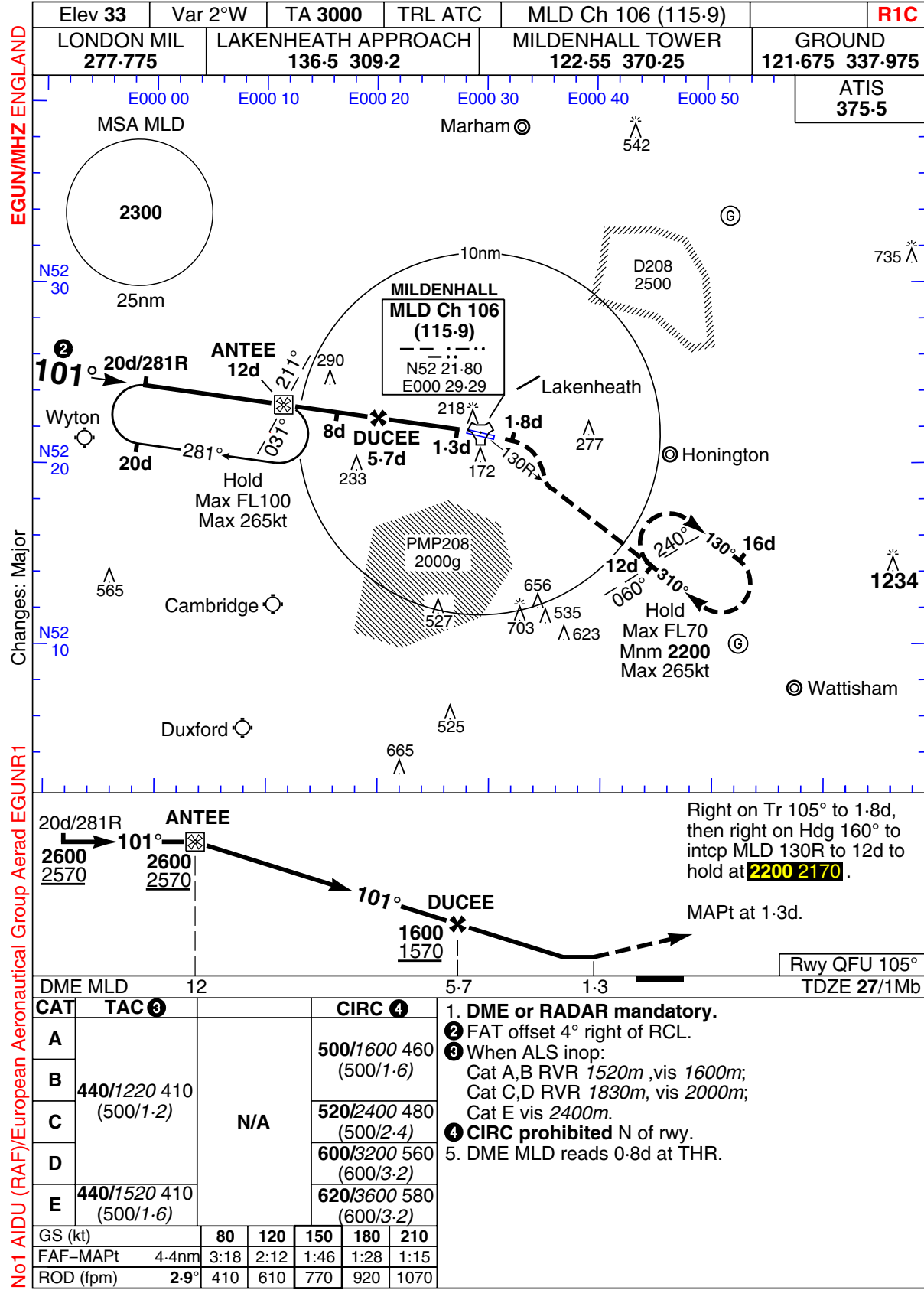
HI ILS Rwy 24

07 AUG 03

INTENTIONALLY BLANK

TAC Rwy 11

MILDENHALL



MILDENHALL
TERPS (FAA)

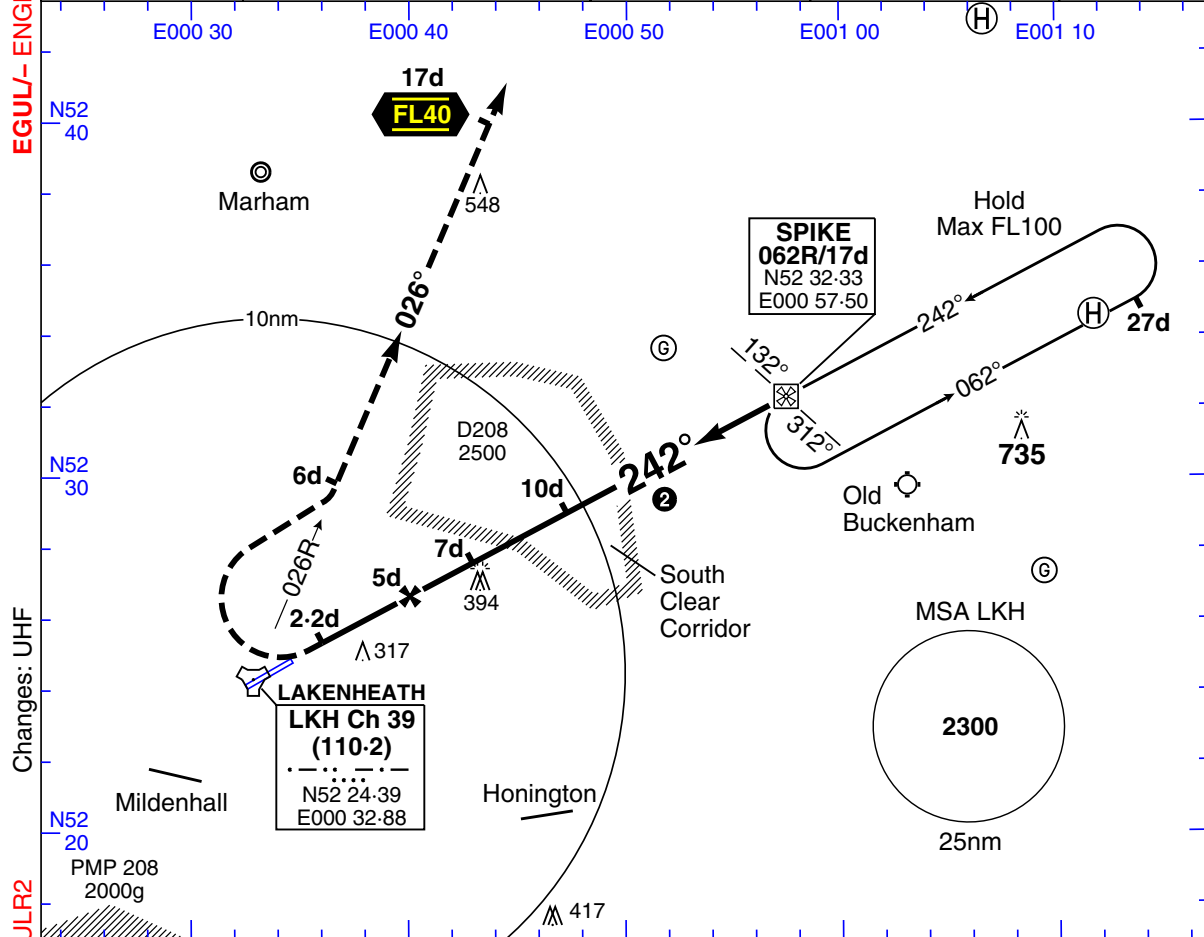
TAC Rwy 11

19 JAN 06

TAC Rwy 24

LAKENHEATH

Elev 32	Var 2°W	TA 3000	TRL ATC	LKH Ch 39 (110.2)	R2C
LONDON MIL 277.775	LAKENHEATH APPROACH 136.5 309.2		TOWER 122.1 338.925	GROUND 375.45	ATIS 356.725



Right to intcp LKH 026R to 17d at **FL40**; call APPROACH.
 MAPt at 2.2d.
 Rwy QFU 238°
 TDZE 32/1Mb

CAT	TAC	PAR (2.5°)	CIRC ④				
A	580/1220 550 (600/1.2)	235/730 200 (200/8)	580 550 (600/2.0)				
B	580/1520 550 (600/1.6)		580 550 (600/2.4)				
C			600 570 (600/3.2)				
D							
E			580/2.4 550 (600/2.4)				
GS (kt)		80	120	150	180	210	
FAF-MAPt		2.8nm	2:06	1:24	1:07	0:56	0:48
ROD (fpm)		2.6°	370	550	690	830	970

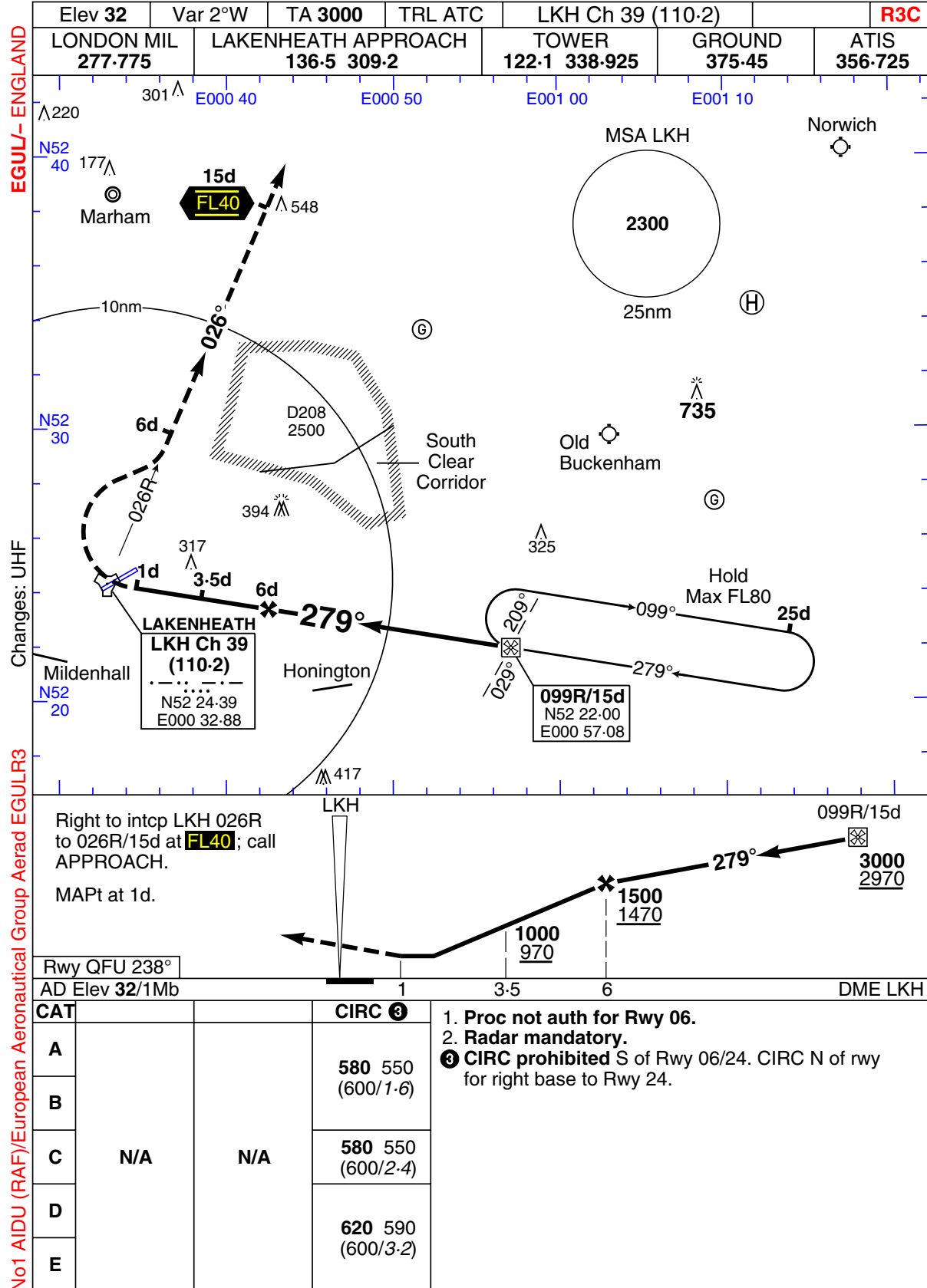
1. Radar monitoring required when D208 active; contact APPROACH for status.
- ② FAT offset 4° left of RCL.
3. Do not cross N of LKH 062R btn 10d and 13d due to D208.
- ④ CIRC prohibited S of Rwy 06/24.
5. DME LKH reads 1.2d at THR.

LAKENHEATH TERPS (FAA)

TAC Rwy 24

TAC A to CIRC to Rwy 24

LAKENHEATH



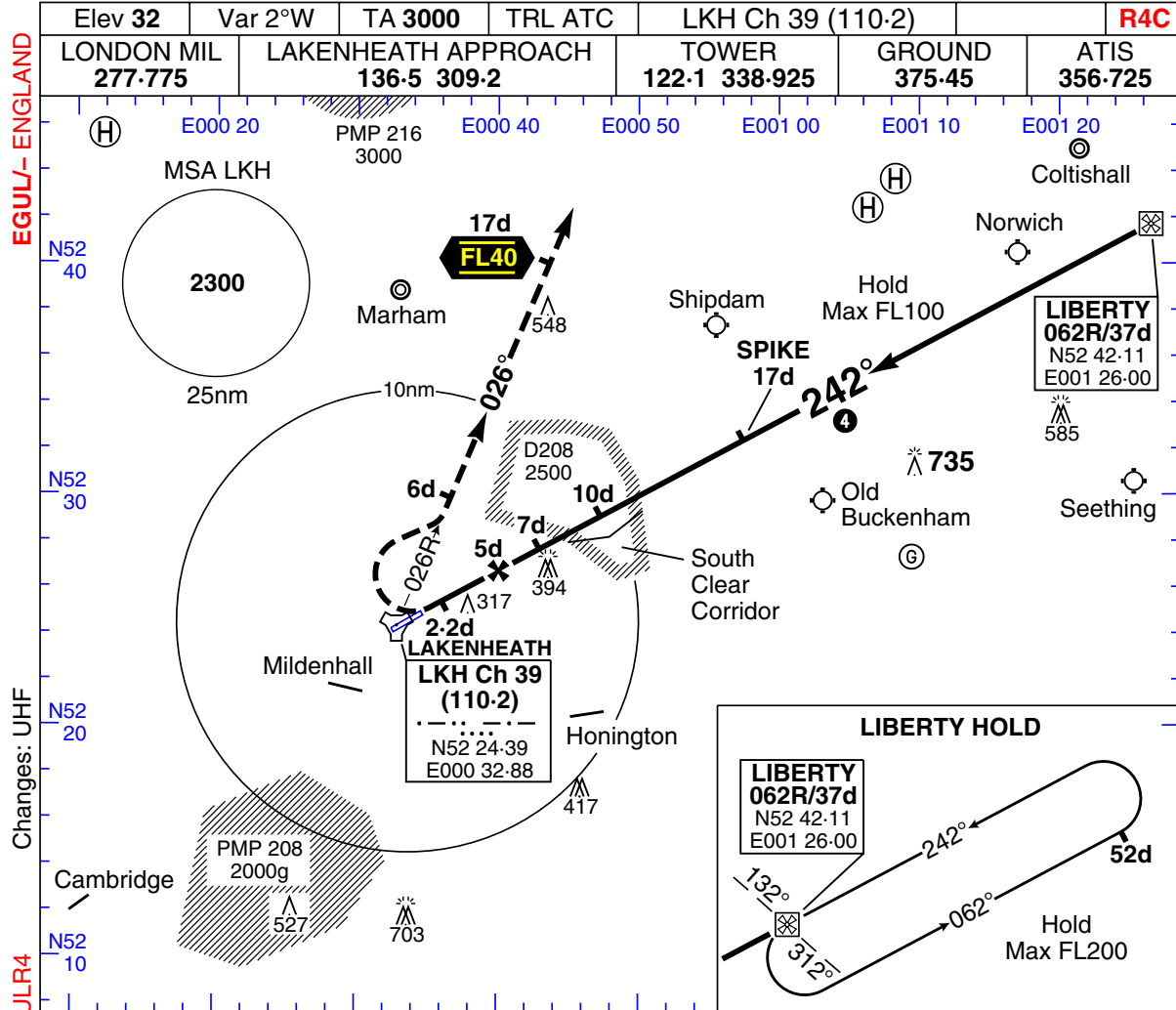
LAKENHEATH
TERPS (FAA)

TAC A to CIRC to Rwy 24

19 JAN 06

HI TAC Rwy 24

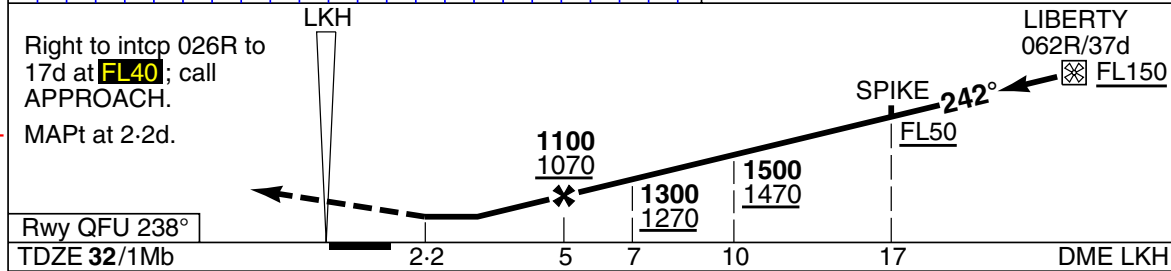
LAKENHEATH



EGUL - ENGLAND

Changes: UHF

No1 AIDU (RAF)/European Aeronautical Group Aerad EGULR4



CAT	TAC	PAR (2-5°)	CIRC	Notes
C	580/1-52 550 (600/1-6)		580 550 (600/2-4)	1. Radar monitoring required when D208 active; contact APPROACH for status. 2. CIRC prohibited S of Rwy 06/24. 3. Do not cross N of LKH 062R btn 10d and 13d due to D208. 4. FAT offset 4° left of RCL. 5. DME LKH reads 1-2d at THR.
D	580/1-83 550 (600/2-0)	235/730 200 (200/8)		
E	580/2-4 550 (600/2-4)		600 570 (600/3-2)	

LAKENHEATH
TERPS (FAA)

HI TAC Rwy 24